

**SİSTEM PLATFORM
IZGARA METAL
SAN. TİC. LTD. ŞTİ.**

MANUFACTURING

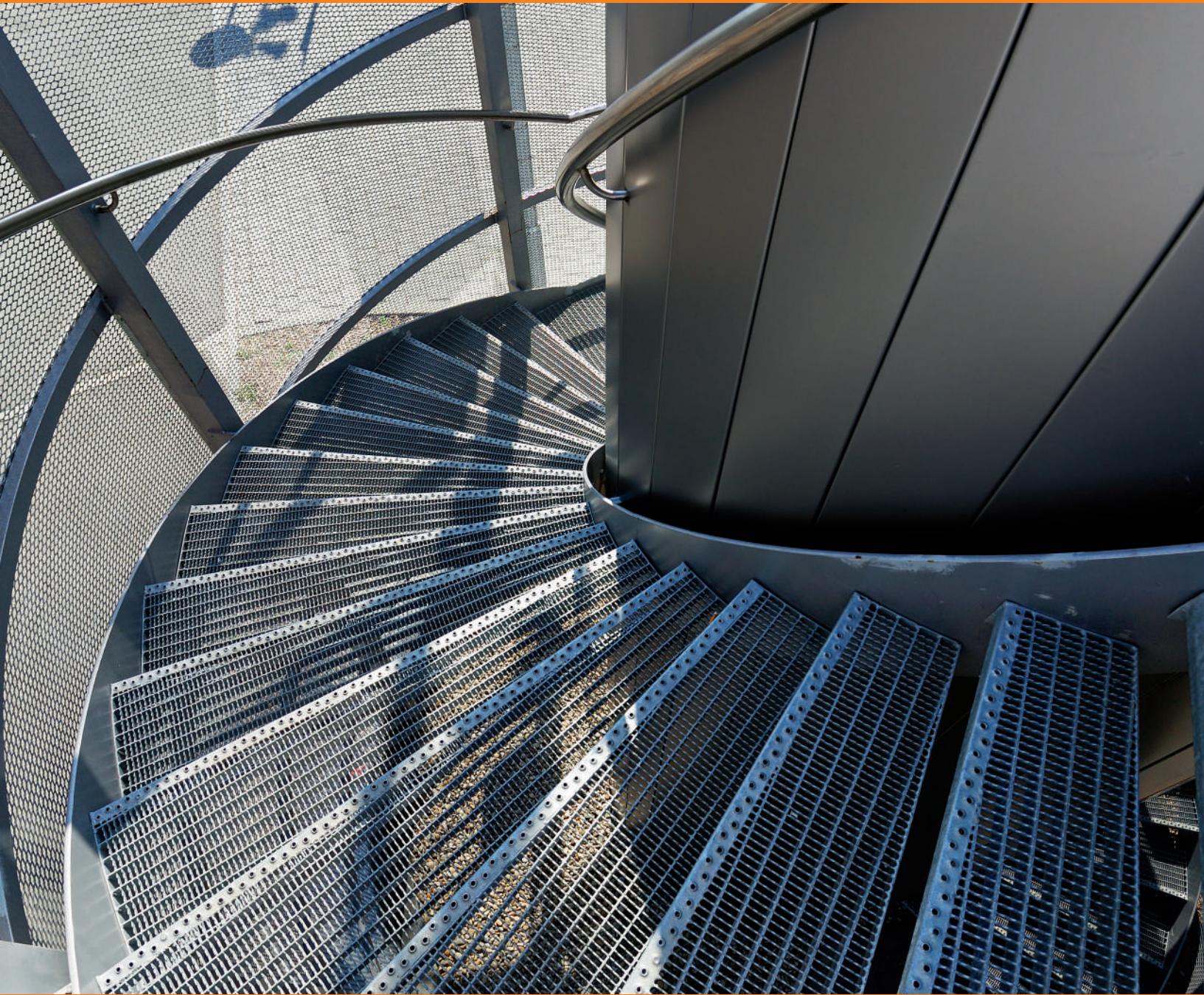
With high-quality machine-park, it is one of the leading organizations in the industry in manufacturing of platform grating and expanded metal.

Since its establishment in Ankara in 1990, Sistem Platform lead the industry with its expert manufacturing team, high technology production lines, and technical staff, ensuring 100% customer satisfaction. With qualified staff, Sistem Platform has a full-capacity manufacturing site of 4500 m² in Ankara OSTİM OIZ as of 2012 and Anatolian Organized Industry as of 2020 in order to meet the demand both of domestic customers and foreign customers and provide high-quality services.

Since its establishment, Sistem Platform aims at minimum cost and maximum efficiency for punctual delivery to our customers. We share the objectives of organizations we collaborate and make a difference in the industry through 360 degree services we provide from manufacturing to customer services.

Thanks to our expert staff and our plant where we provide 360-degree services, Sistem Platform produces all of your orders in accordance with quality standards to deliver superior quality products.





MANUFACTURING

Sistem Platform set as an example for its competitors, adopting a principal for excellent manufacturing and quality products.

The concept of "quality" is a must to Sistem Platform as a major objective to achieve. It is the quality what is of utmost important from supply of raw materials to shipping, and it has been entitled to receiving ISO 9001:2015 certification in a short span of time. Through its operations, it targets to maintain a tight exchange with its customers at high level.

Sistem Platform sets an example for its competitors, adopting a goal of timely excellent manufacturing and quality products.



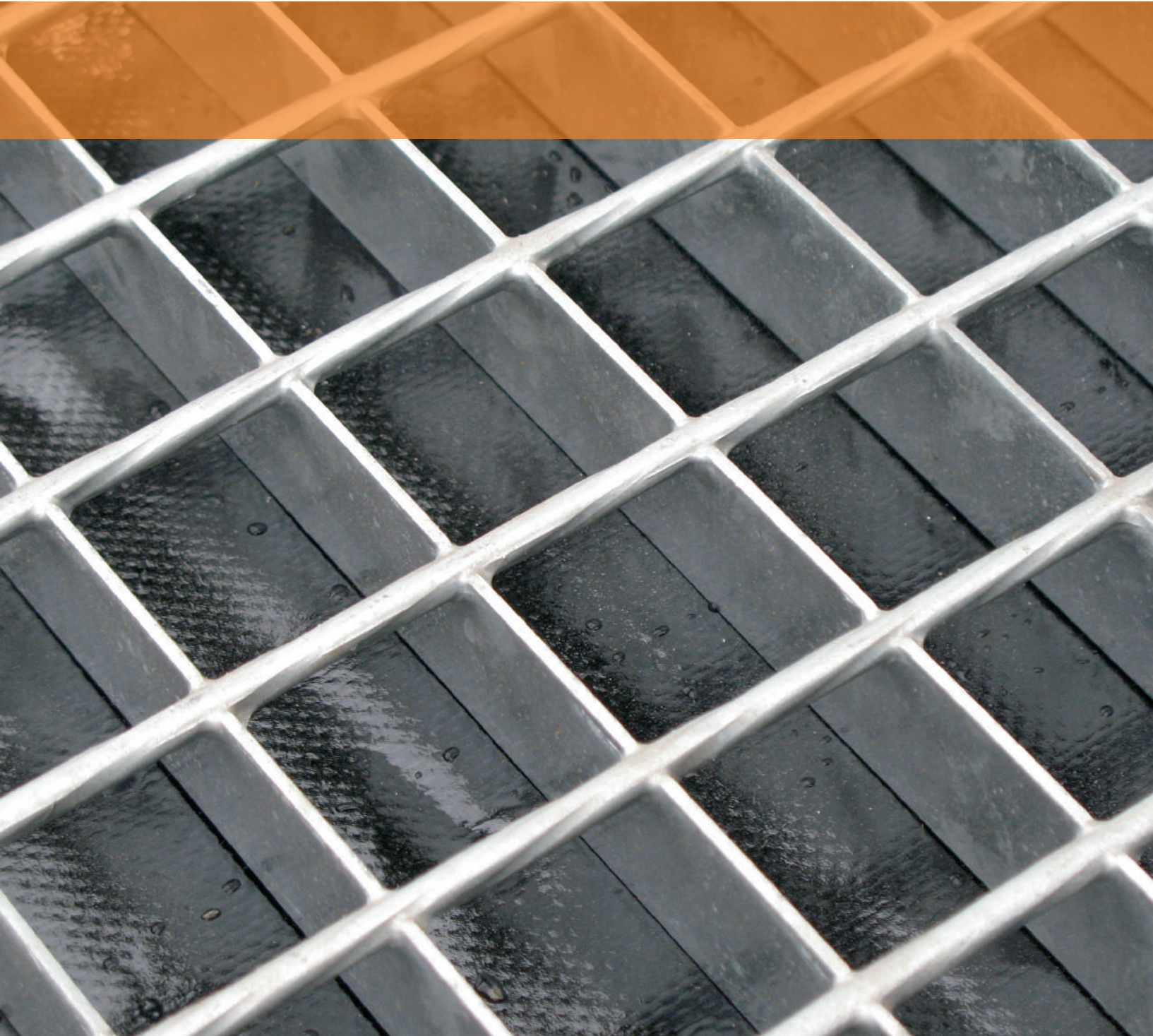


PLATFORM GRATING

Platform grating is one of the best products with a wide range of materials and surface options to allow you to use it for your projects without any concerns about reliability or aesthetics. Platform grating is available in different types subject to area of application.

Platform grating is a low-cost product that has a high bearing capacity and longer lifecycle. It may be used for decorative partition panels, sun blinds, and garden fence as well as for any catwalk, platform and safe passing lines. Due its hollow construction, platform grating is used to achieve light-weight and more durable structures. Platform grating is one of the best products with a wide range of materials and surface options to allow you to use it for your projects without any concerns about reliability or aesthetics. Platform grating is available in different types subject to area of application. A specific type is chosen based on the customer requirements and area of use. It can be manufactured in specific dimensions or special cut types, which is a major advantage. The limitations on dimension or shape are therefore eliminated, so it is tailored to your project to achieve a more practical application and more aesthetic appearance. Cutting, frame welding and specific dimensioning is not an extra cost to Sistem Platform in addition to manufacturing of standard types of grating.





GRATING TYPES

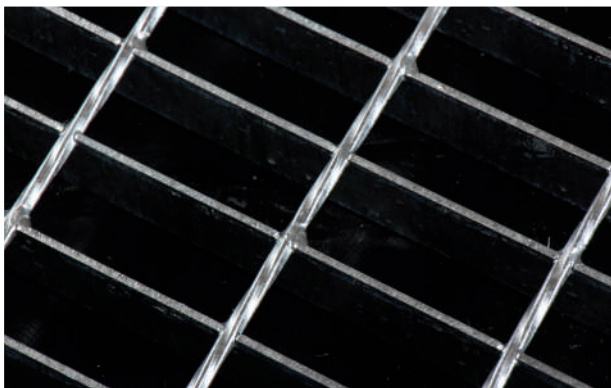
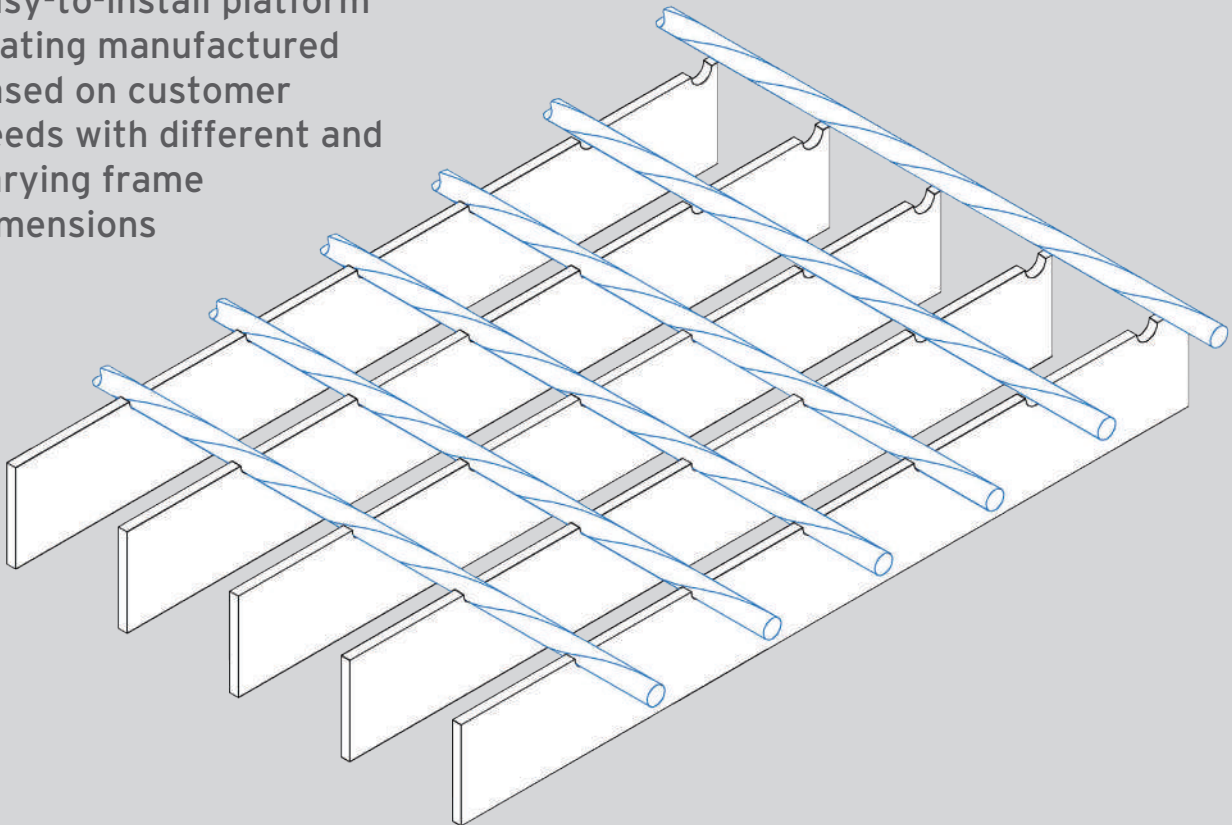
SQUARE TWIST
HALF-PASS
FULL PASS



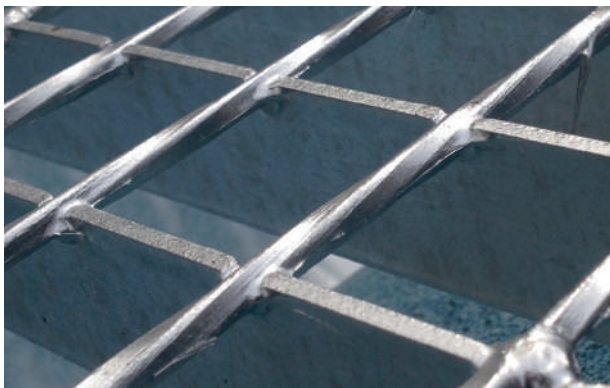
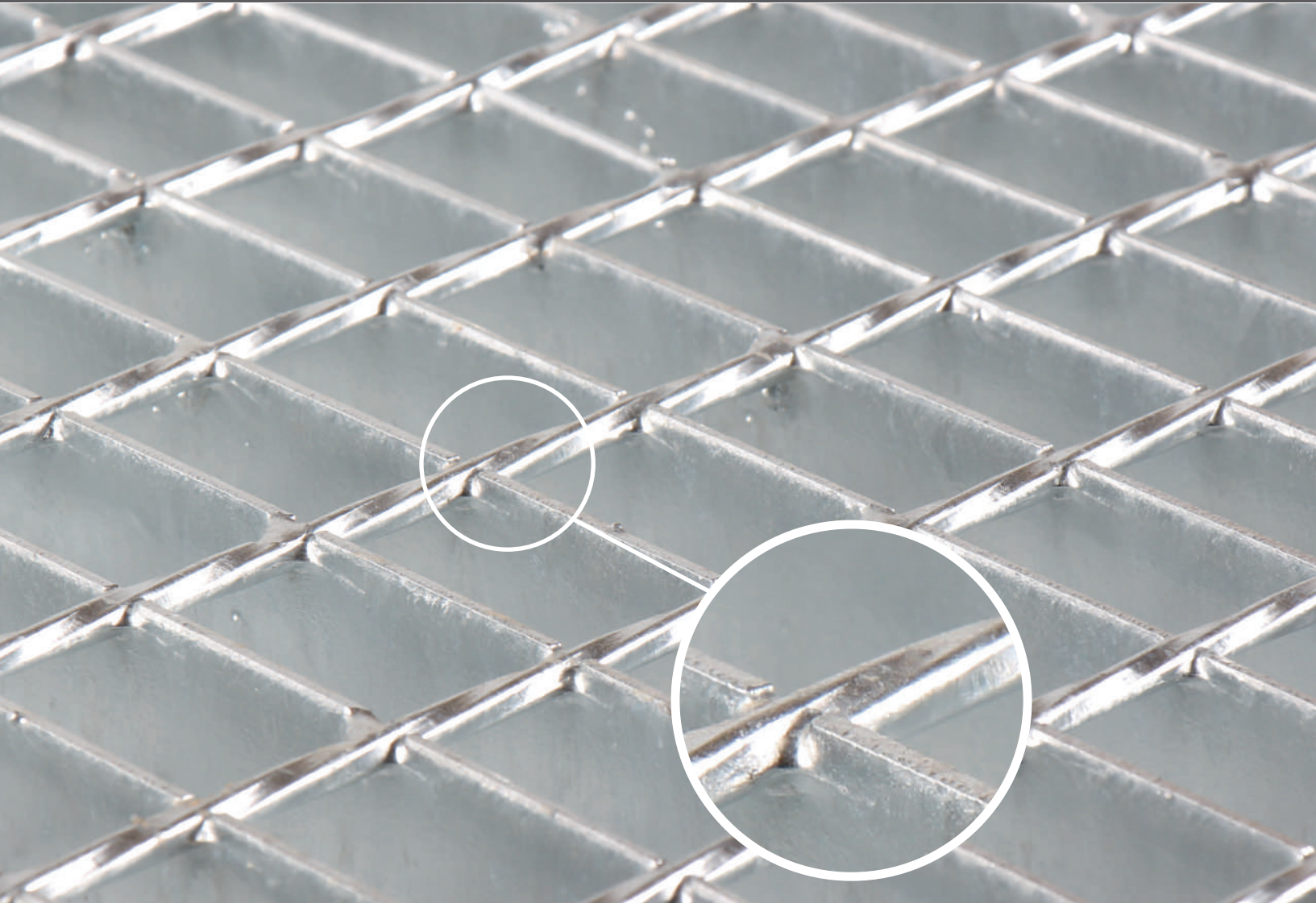
PLATFORM GRATING

SQUARE TWIST STANDARD GRATING

- It is a light-weight and easy-to-install platform grating manufactured based on customer needs with different and varying frame dimensions



- The load-bearing sheet bars are selected based on the bearing capacity and technical specifications of area of application. Optionally, it is hot dip galvanized.



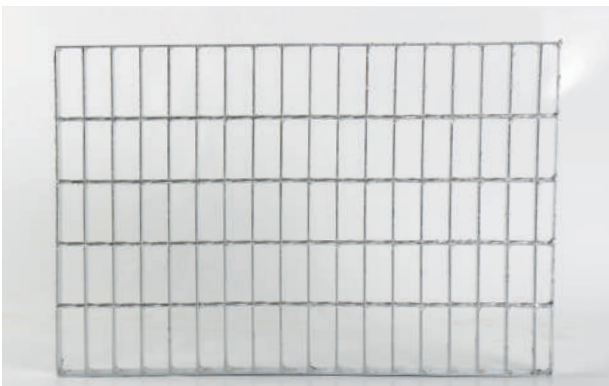
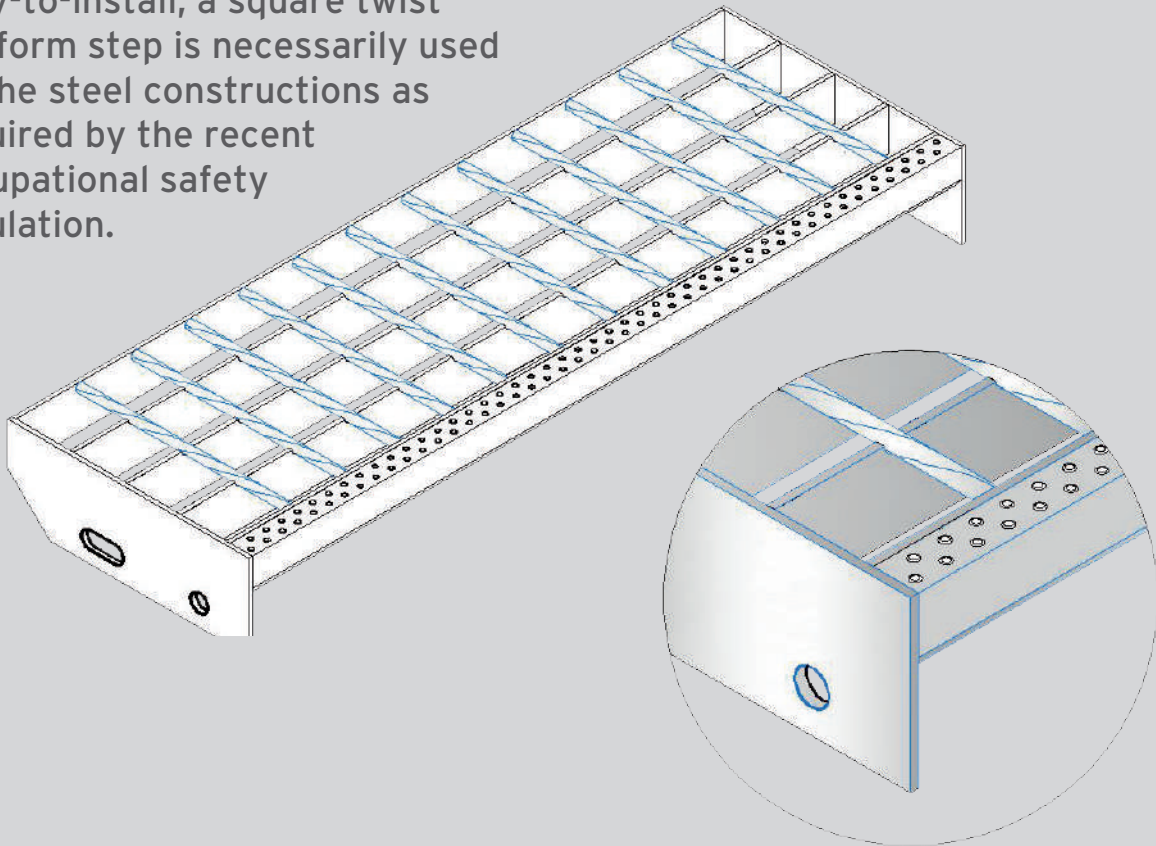
- It is constructed by load-bearing sheet bars and square twists interconnecting the sheet bars, and typically used for catwalks.



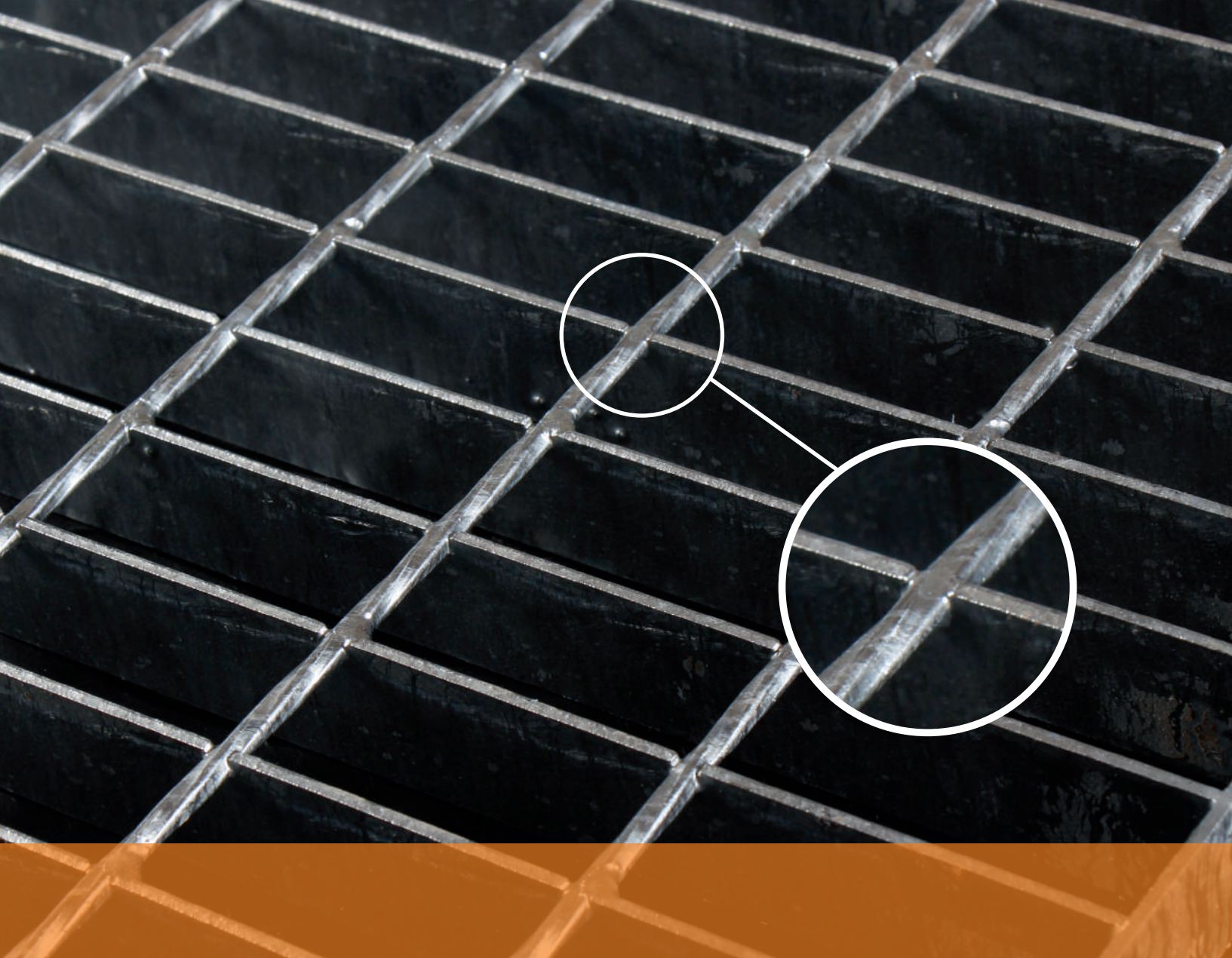
PLATFORM GRATING

SQUARE TWIST STANDARD STEPS

- As it is light-weight, stylish and easy-to-install, a square twist platform step is necessarily used on the steel constructions as required by the recent occupational safety regulation.



- The nonslip tread reduces the sliding when the human feet contacts with slippery items in the environment. It is typically made of load-bearing sheet bars and mounting faces.



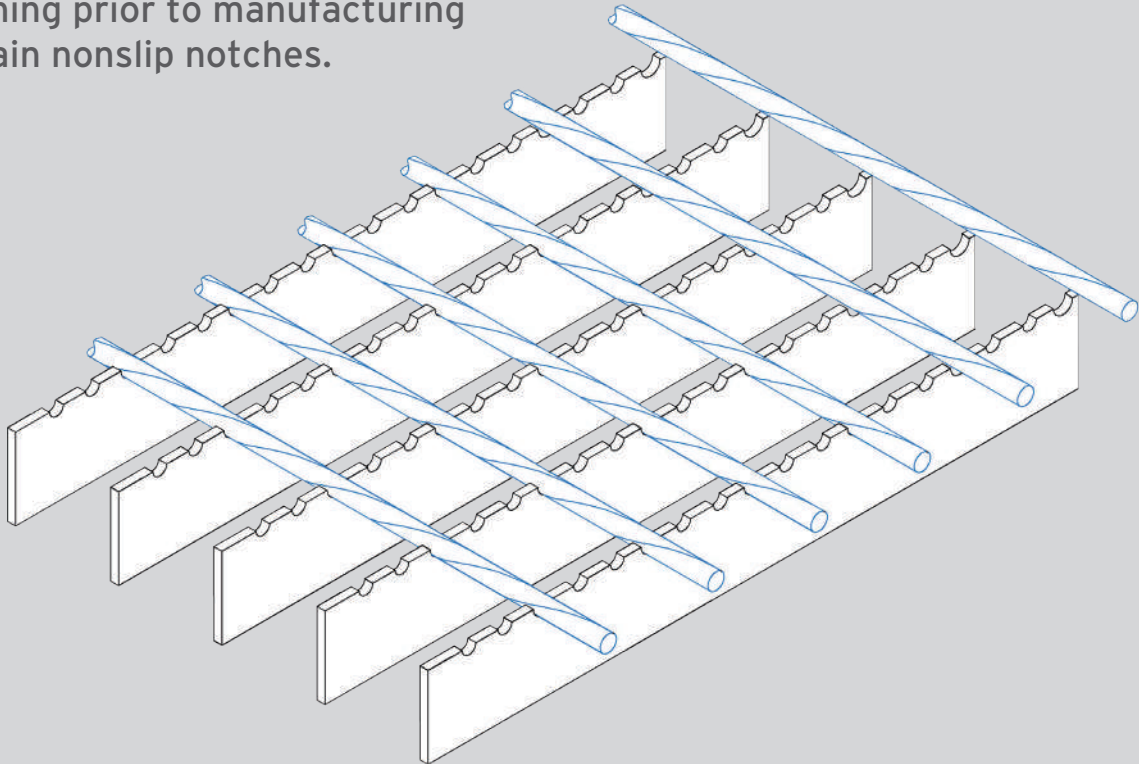
- We may remove any items of this product upon request. Optionally, it is hot dip galvanized, or painted, or manufactured without coating.



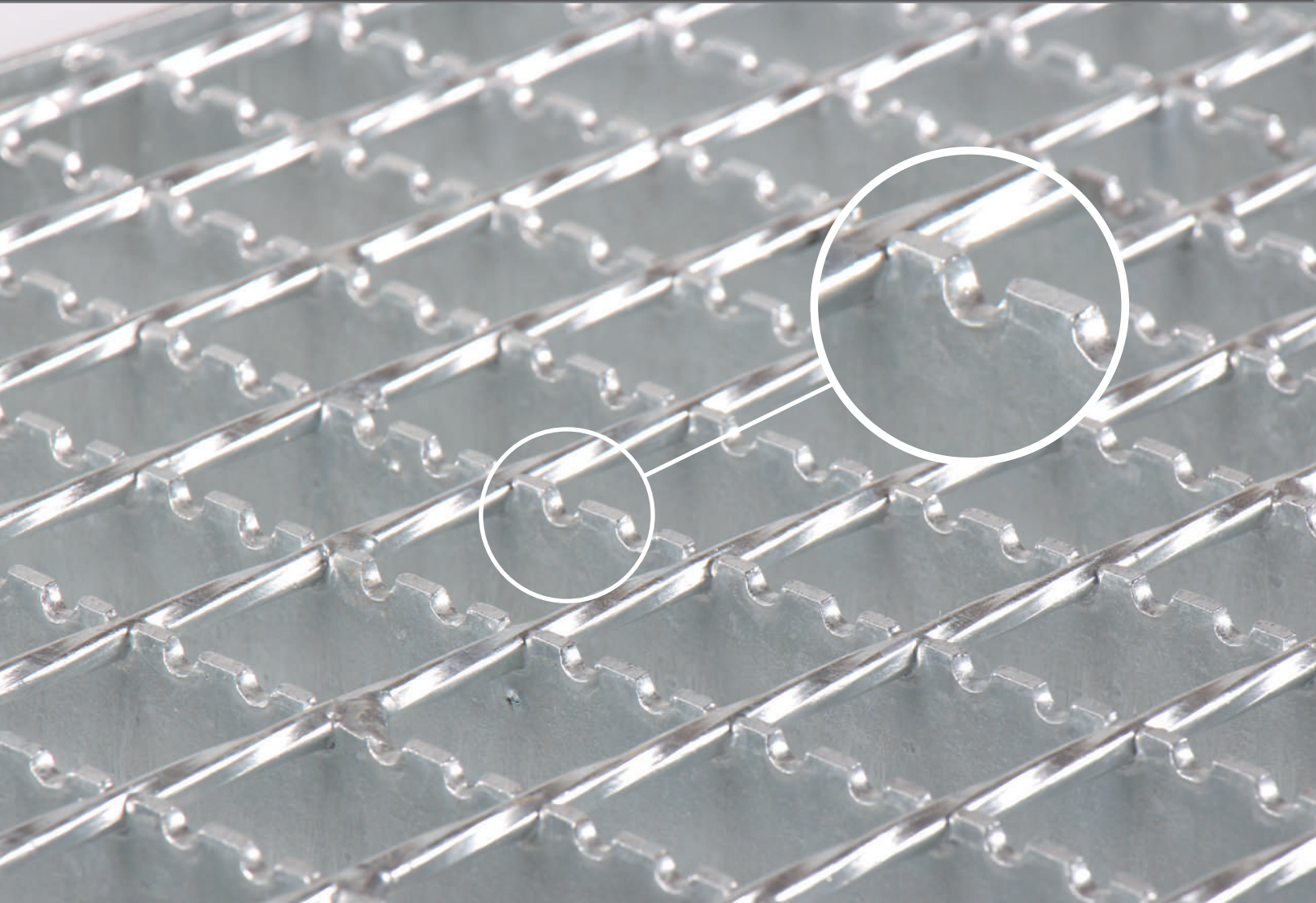
PLATFORM GRATING

SQUARE TWIST NOTCHED GRATING

- The platform grating used for the catwalks undergoes a special machining prior to manufacturing to obtain nonslip notches.



- It is a types of platform grating ensuring worker's safety against any items that makes surfaces slippery in the working environment.



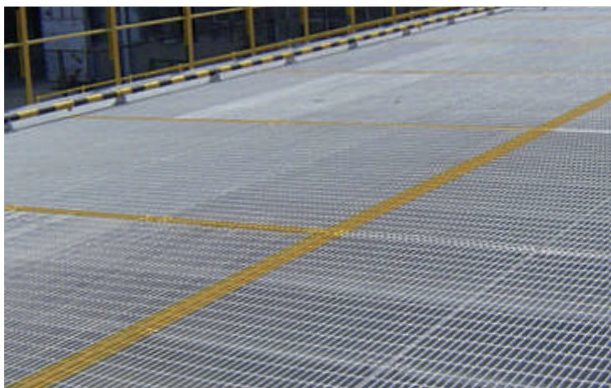
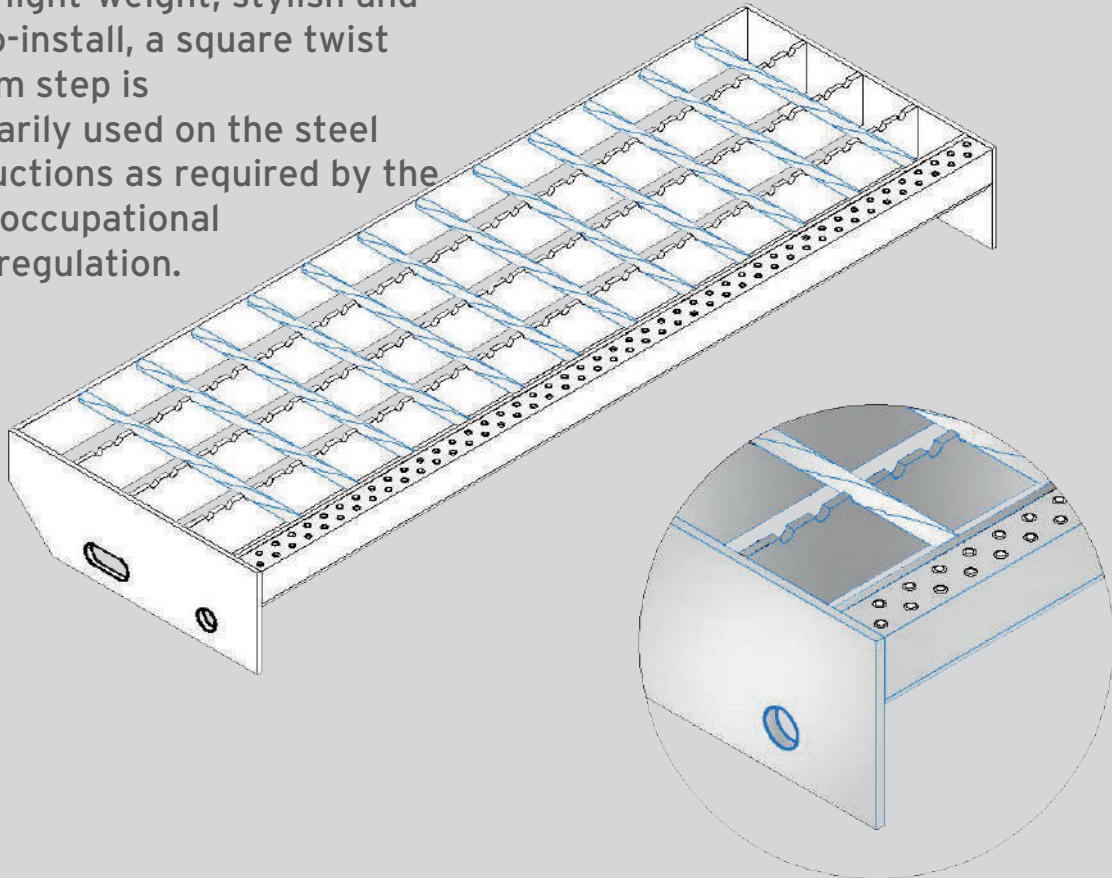
- As the square twist grating is lighter than other types of grating, it is the ideal type for handling and cost. Optionally, it may be hot dip galvanized.



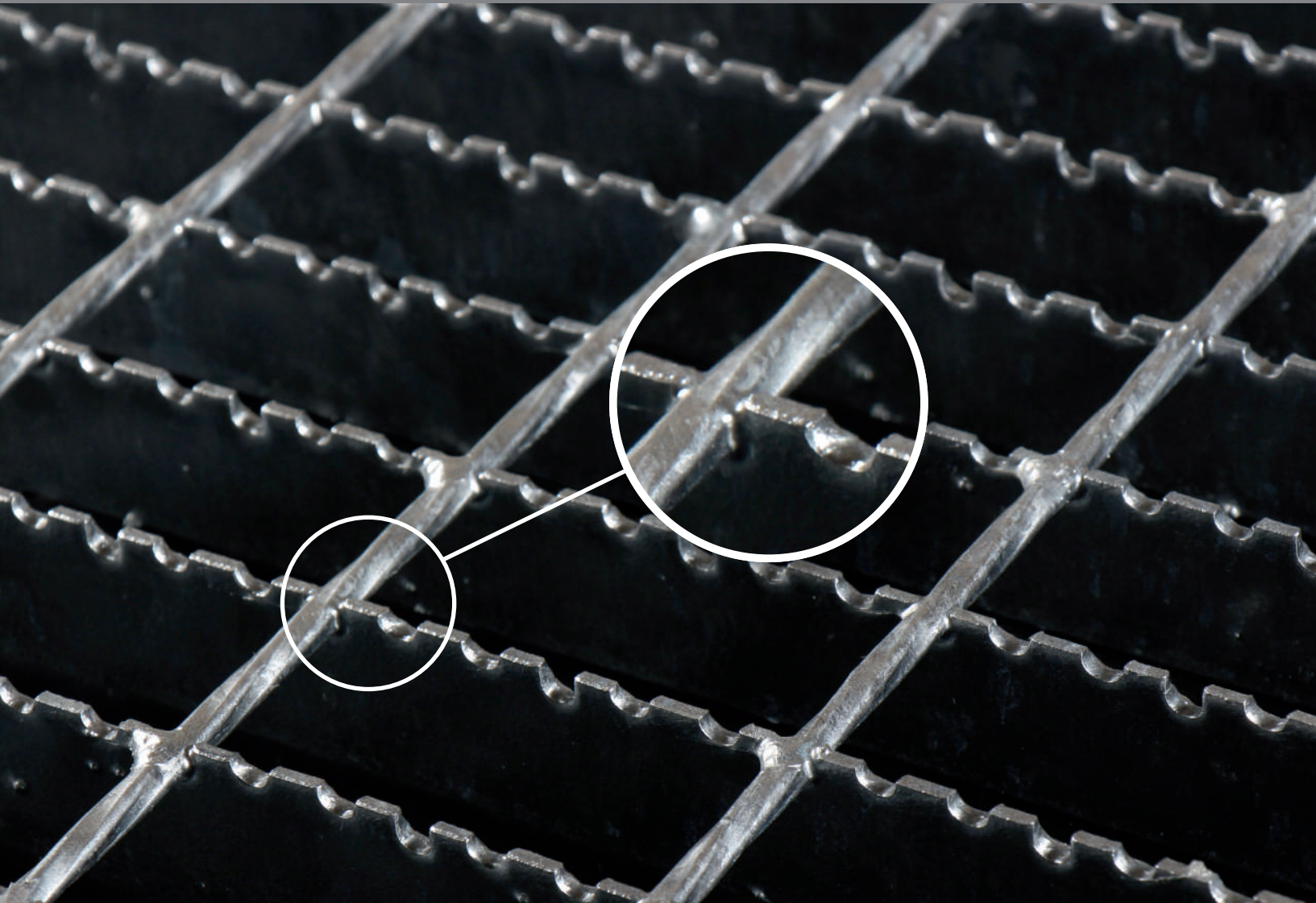
PLATFORM GRATING

SQUARE TWIST NOTCHED STEP

- As it is light-weight, stylish and easy-to-install, a square twist platform step is necessarily used on the steel constructions as required by the recent occupational safety regulation.



- The nonslip nosing reduces the sliding when the human feet contacts with slippery items in the environment. It is typically made of load-bearing sheet bars and mounting.



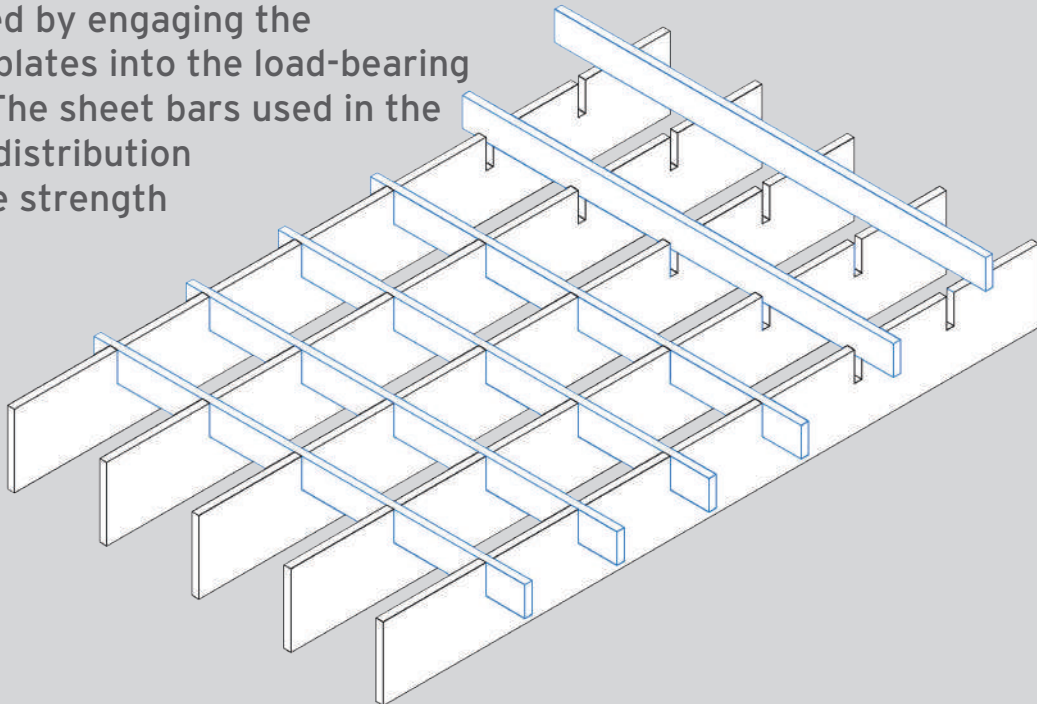
- The notches made on the load-bearing sheet bars minimize the nonslip of feet so that the step is completely non-slippery. Optionally, it is hot dip galvanized, or painted, or manufactured without coating.



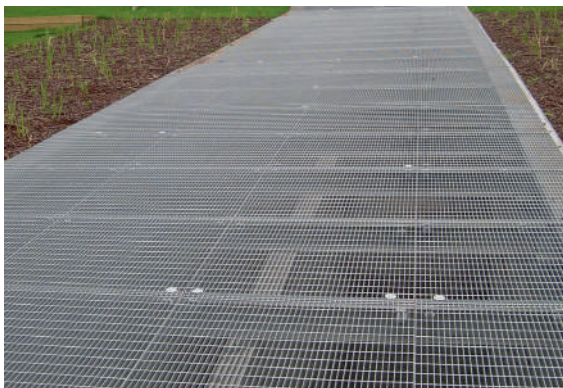
PLATFORM GRATING

HALF PASS STANDARD GRATING

- It is a platform grating where sheet bars is used in the direction of distribution as compared to square twist grating. It is manufactured by engaging the distributing plates into the load-bearing sheet bars. The sheet bars used in the direction of distribution improves the strength of grating.



- It is the most preferred type of platform grating for its appearance and strength. It may be manufactured in different dimensions of load-bearing and distributing sheet bars.



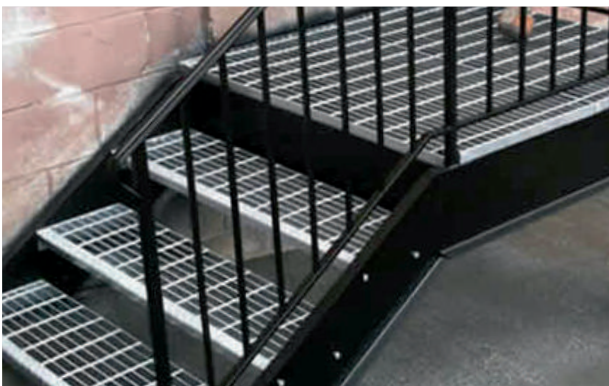
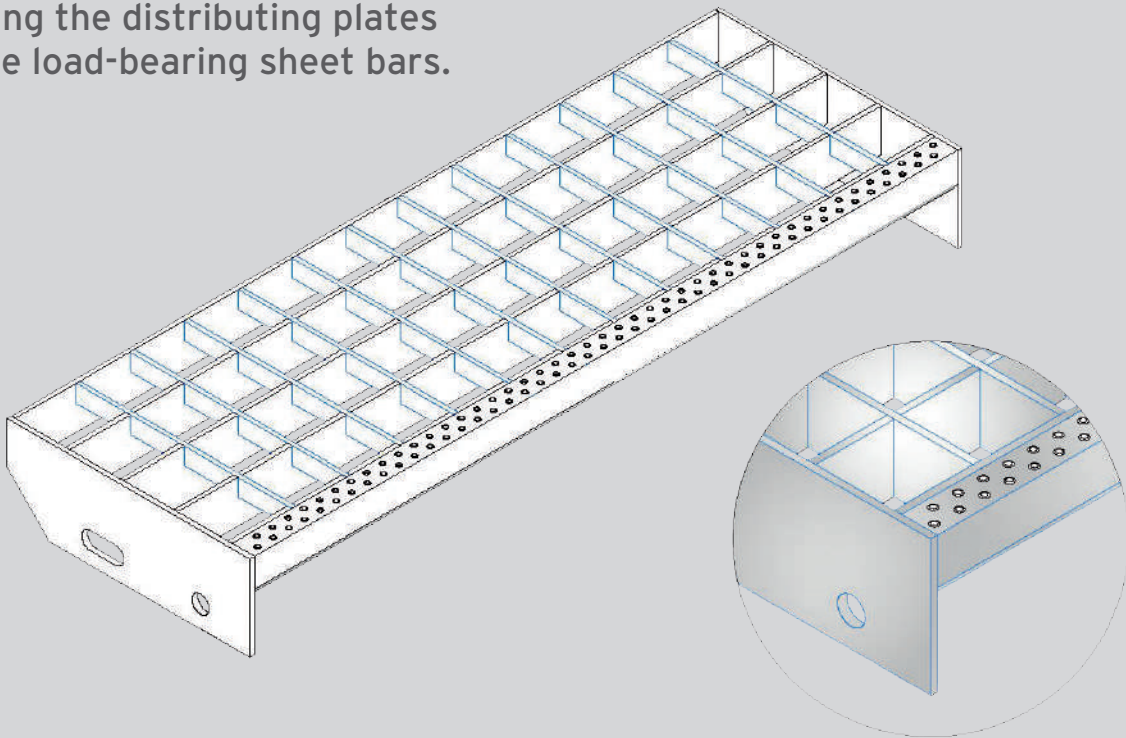
- Optionally, it is hot dip galvanized, or painted, or manufactured without coating.



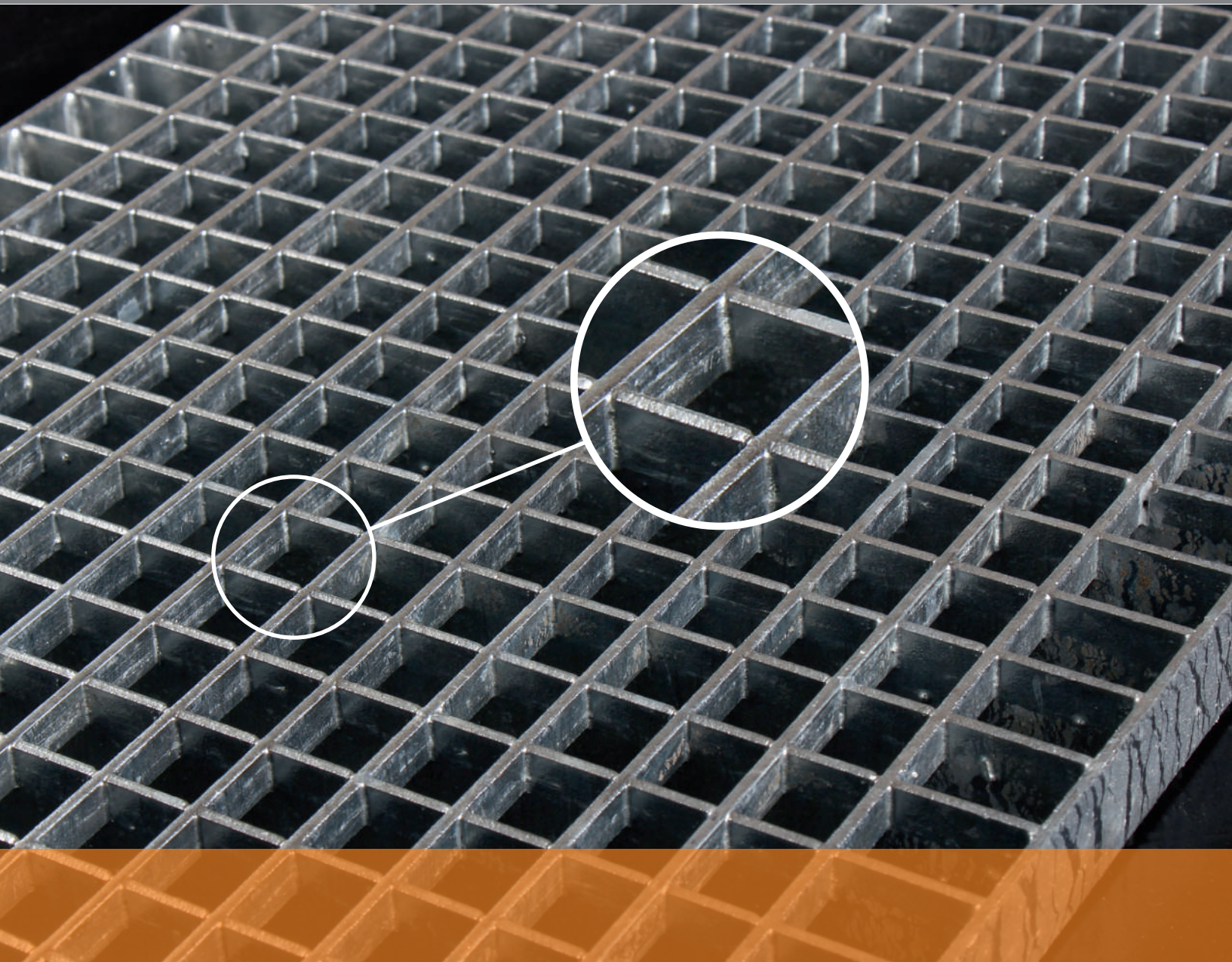
PLATFORM GRATING

HALF PASS STANDARD STEP

- As in the types of platform grating, the half pass step grating is manufactured by engaging the distributing plates into the load-bearing sheet bars.



- The steps contain extra mounting faces and nonslip nosing as compared to platform grating. The mounting face allows easy mounting of steps on the profile.



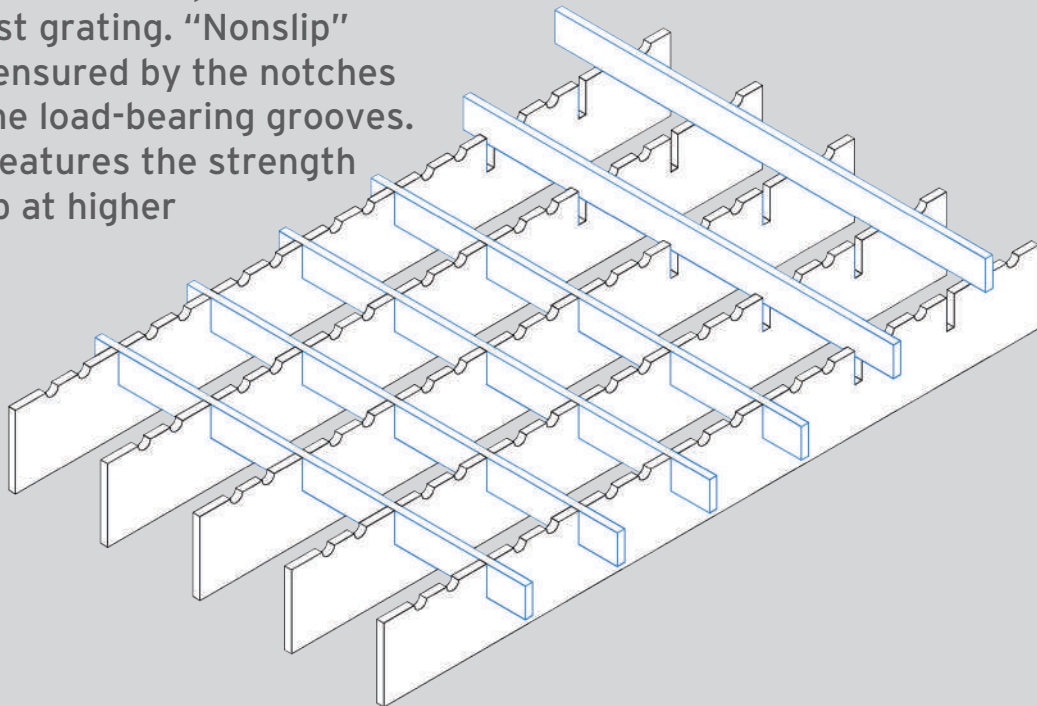
- The round holes on the nosing ensures nonslip of feet. It is the most preferred type for strength. Optionally, it is hot dip galvanized, or painted, or manufactured without coating.



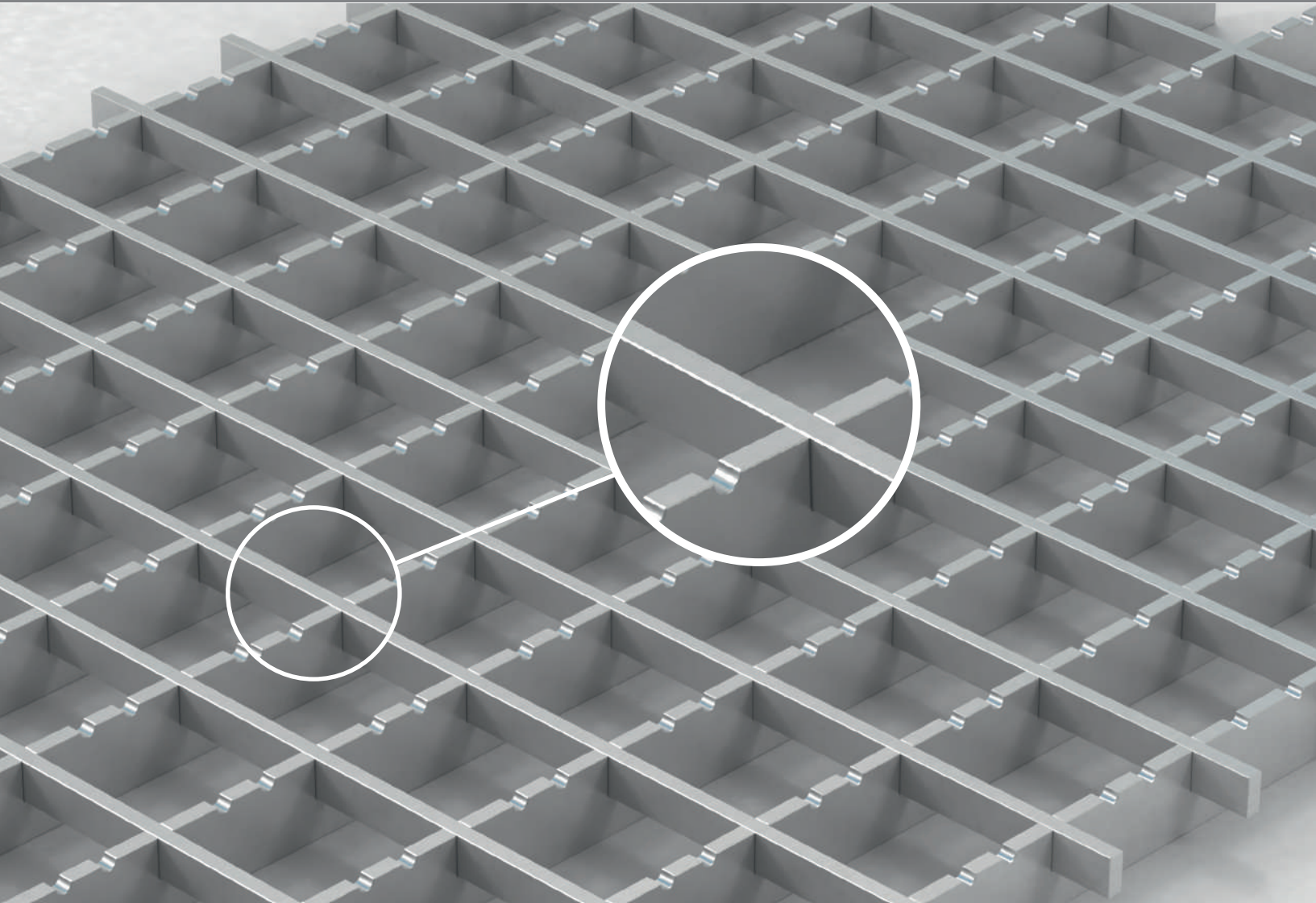
PLATFORM GRATING

HALF PASS NOTCHED GRATING

- It is a platform grating where sheet bars is used in the direction of distribution as compared to square twist grating. "Nonslip" feature is ensured by the notches made on the load-bearing grooves. This type features the strength and nonslip at higher level.



- The notches made on the load-bearing sheet bars maximizes the nonslip. The sheet bars used in the distributing direction improves the strength of grating.



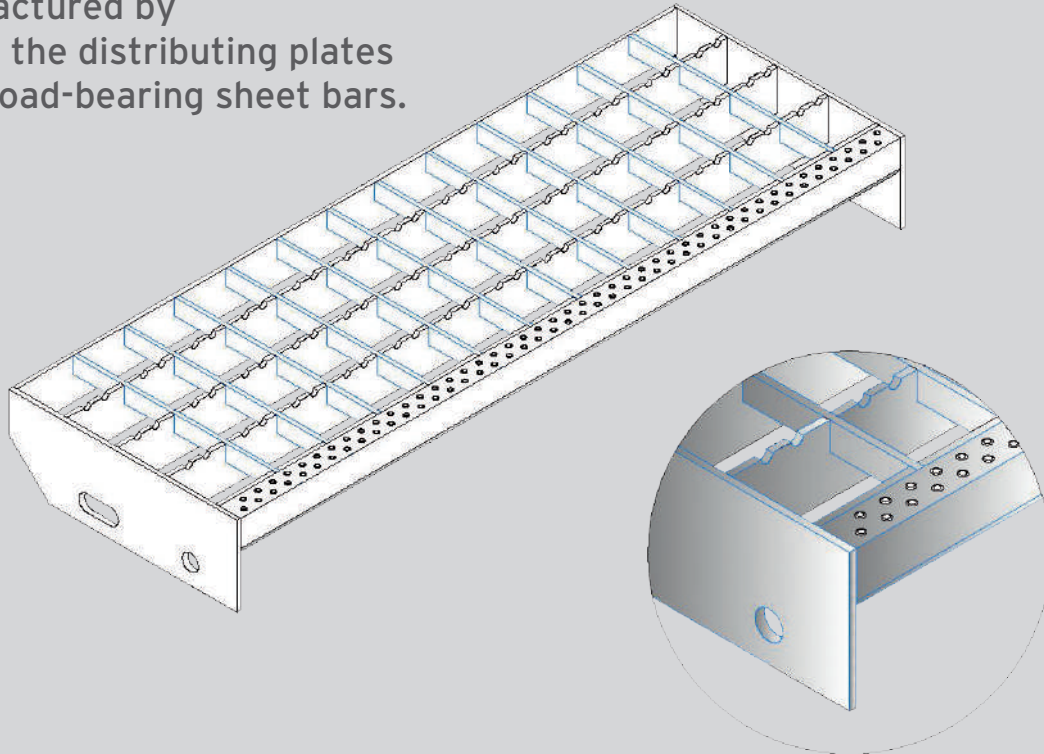
- It is the most preferred type of platform grating for its appearance and strength. It may be manufactured in different dimensions of load-bearing and distributing sheet bars. Optionally, it is hot dip galvanized, or painted, or manufactured without coating.



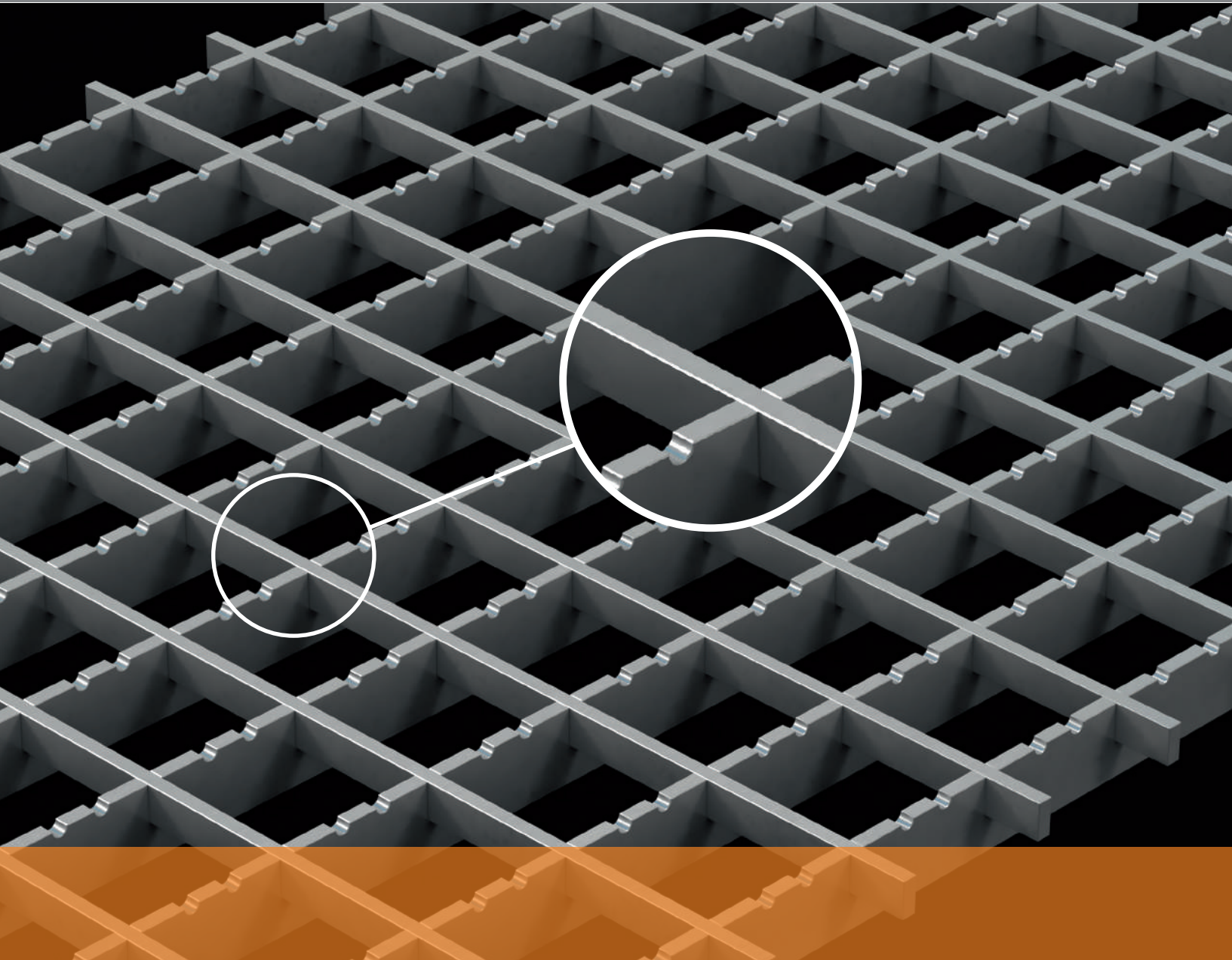
PLATFORM GRATING

HALF PASS NOTCHED STEP

- As in the types of platform grating, the half pass step grating is manufactured by engaging the distributing plates into the load-bearing sheet bars.



- The steps contain extra mounting faces and nonslip nosing as compared to platform grating. The notches made on the load-bearing sheet bars maximizes the nonslip. The mounting face allows easy mounting of steps on the profile.



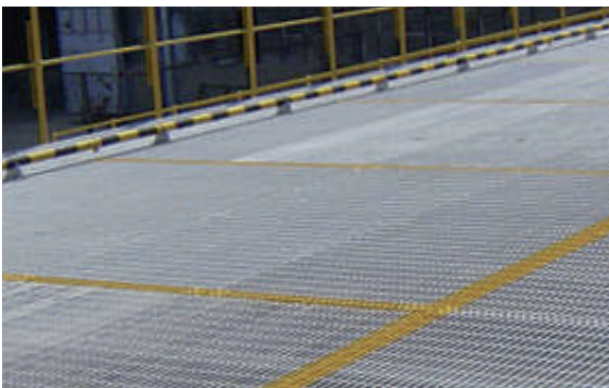
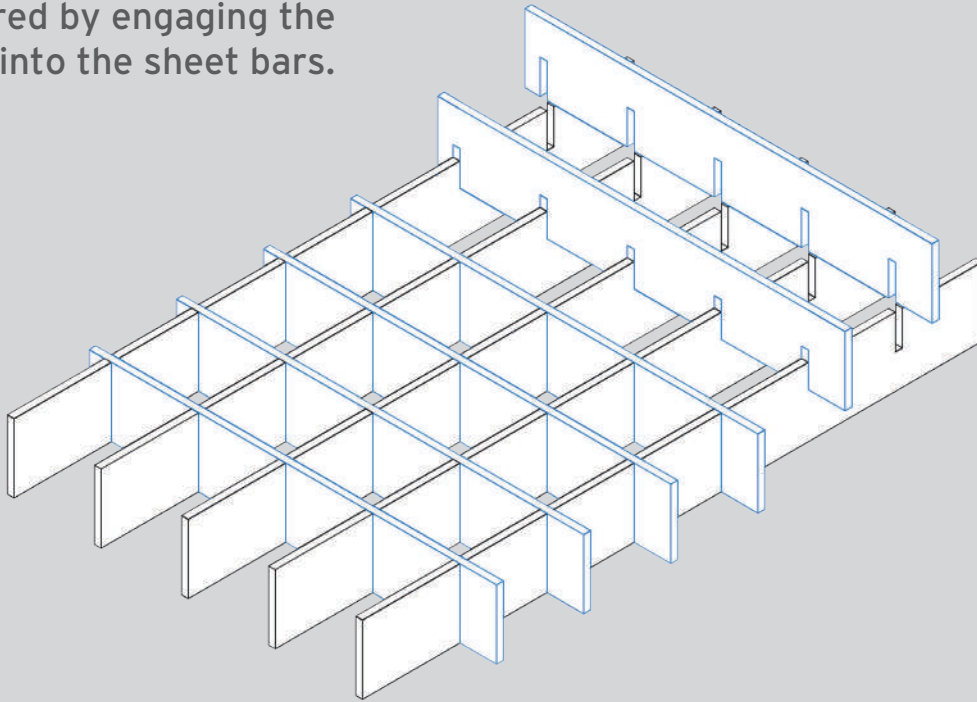
- The round holes on the nosing ensures nonslip of feet. It is the most preferred type for strength. Optionally, it is hot dip galvanized, or painted, or manufactured without coating.



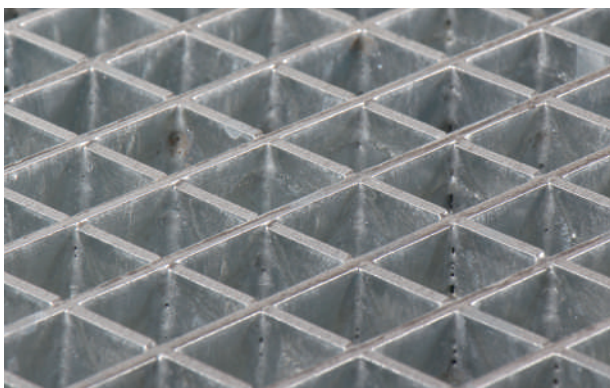
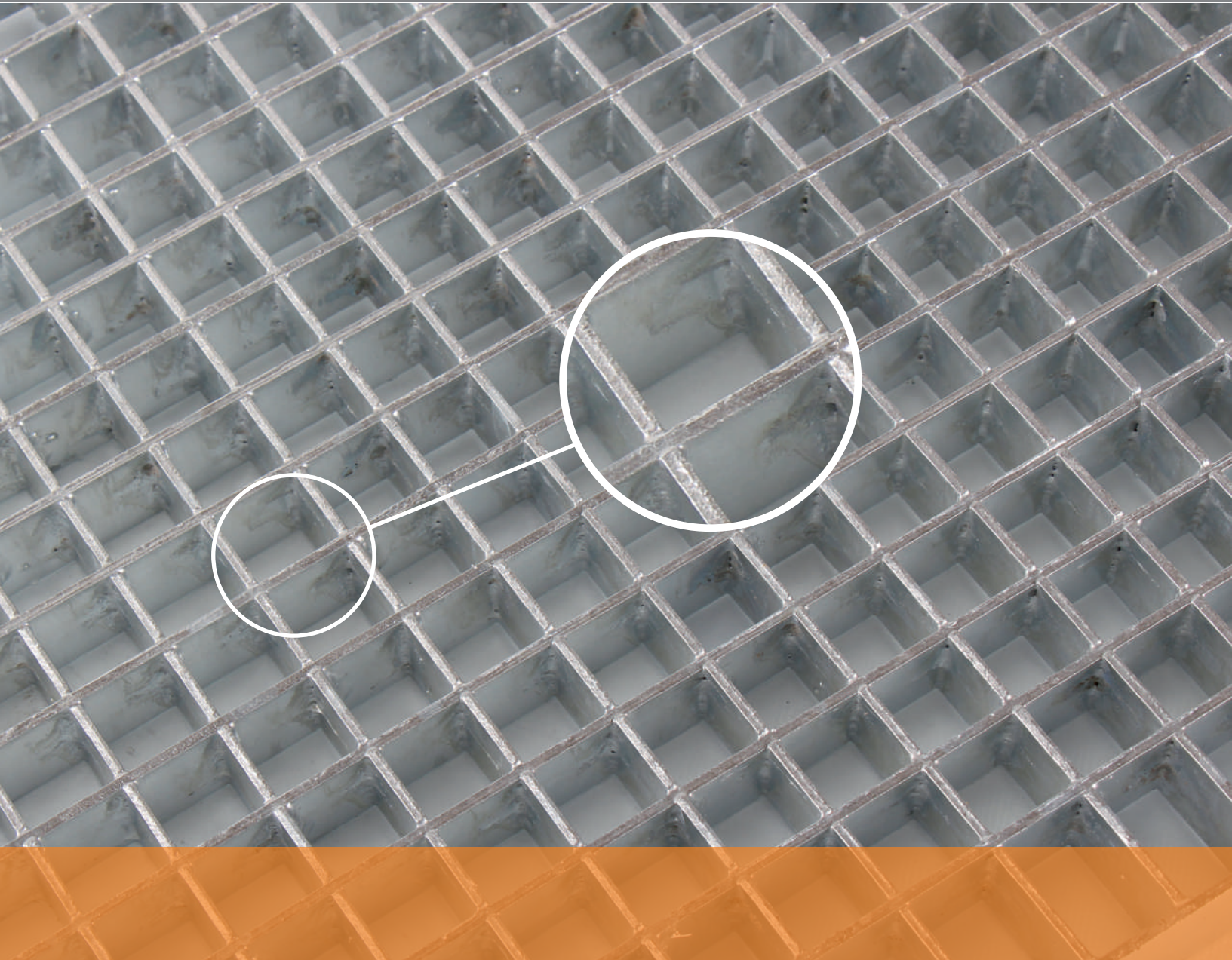
PLATFORM GRATING

FULL PASS STANDARD GRATING

- It is a full pass platform grating manufactured by engaging the sheet bars into the sheet bars.



- It is manufactured using transversal and longitudinal sheet bars of same size. It is heavier than the square twist and half pass platform grating.



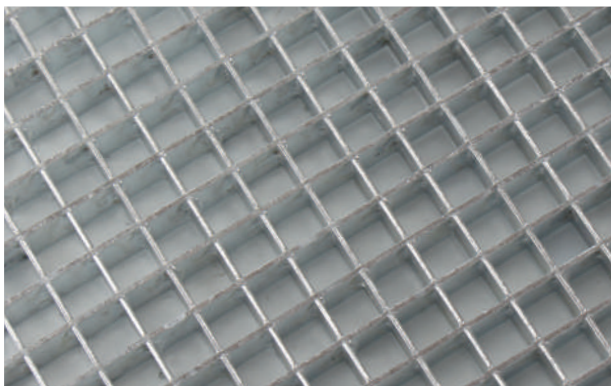
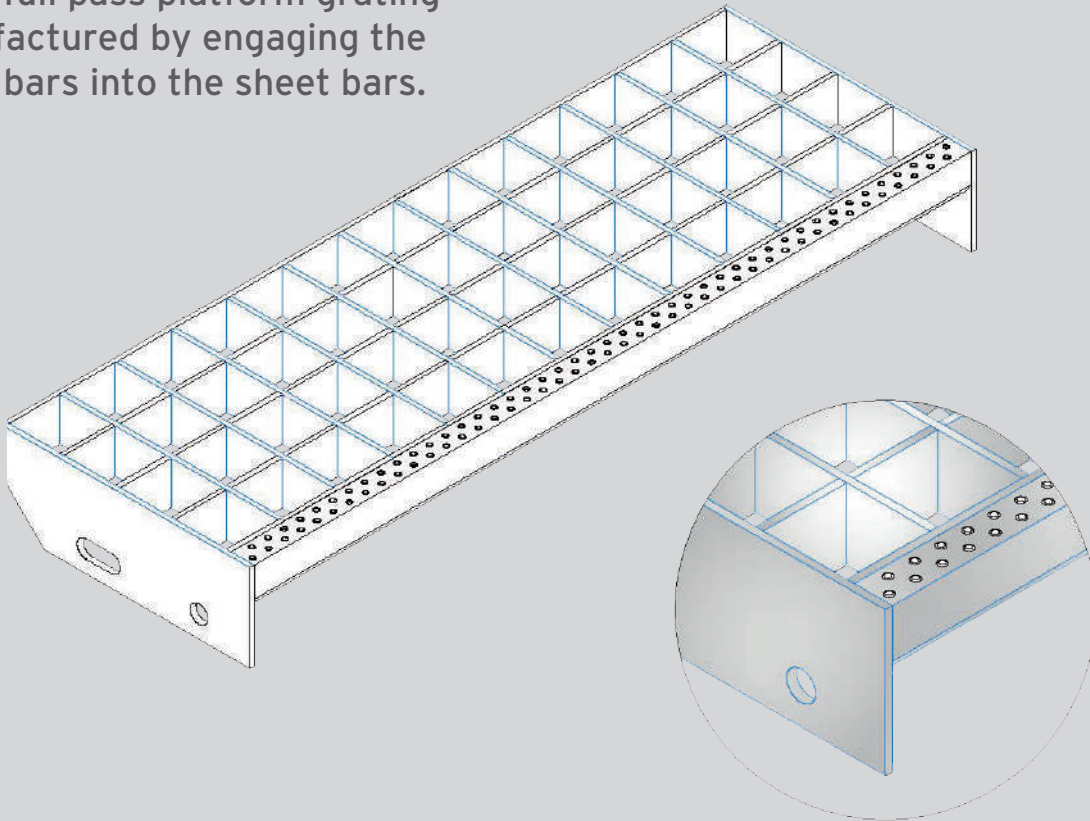
- Full pass platform grating is generally used for decorative purposes as railing, ceiling decoration, façade systems and sun blind.



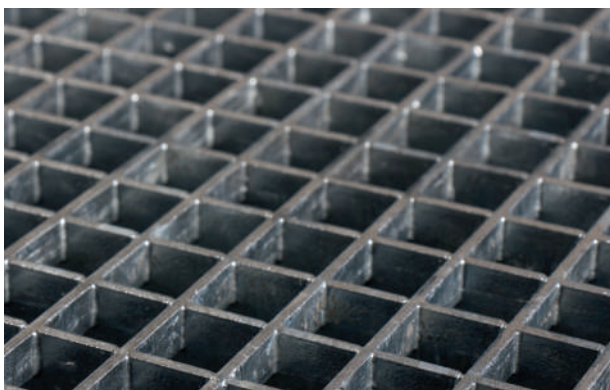
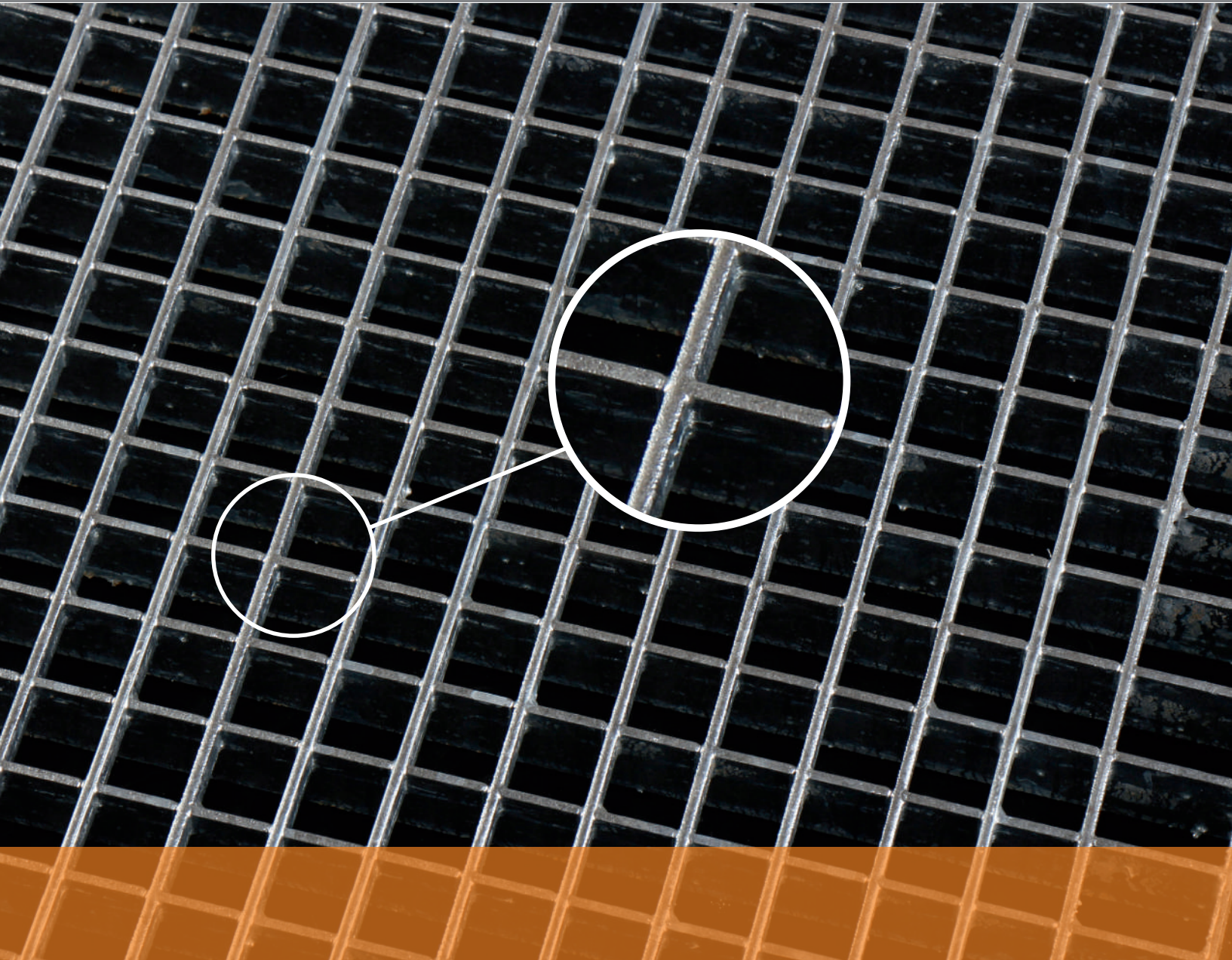
PLATFORM GRATING

FULL PASS STANDARD STEP

- It is a full pass platform grating manufactured by engaging the sheet bars into the sheet bars.



- It is manufactured using transversal and longitudinal sheet bars of same size. It is heavier than the square twist and half pass platform grating.



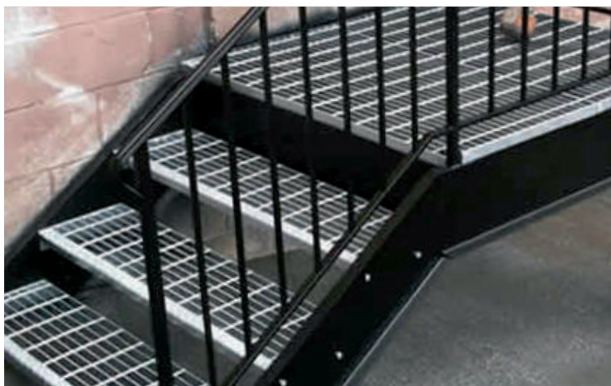
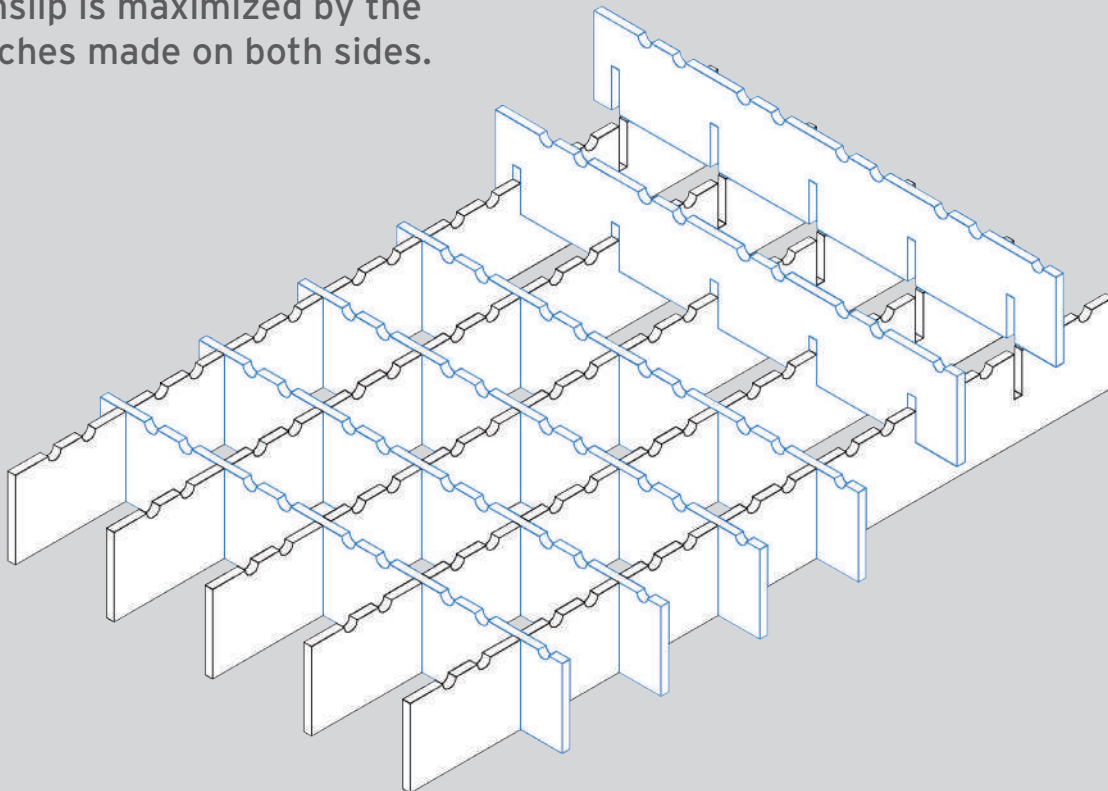
- Full pass platform grating is generally used for decorative purposes as railing, ceiling decoration, façade systems and sun blind.



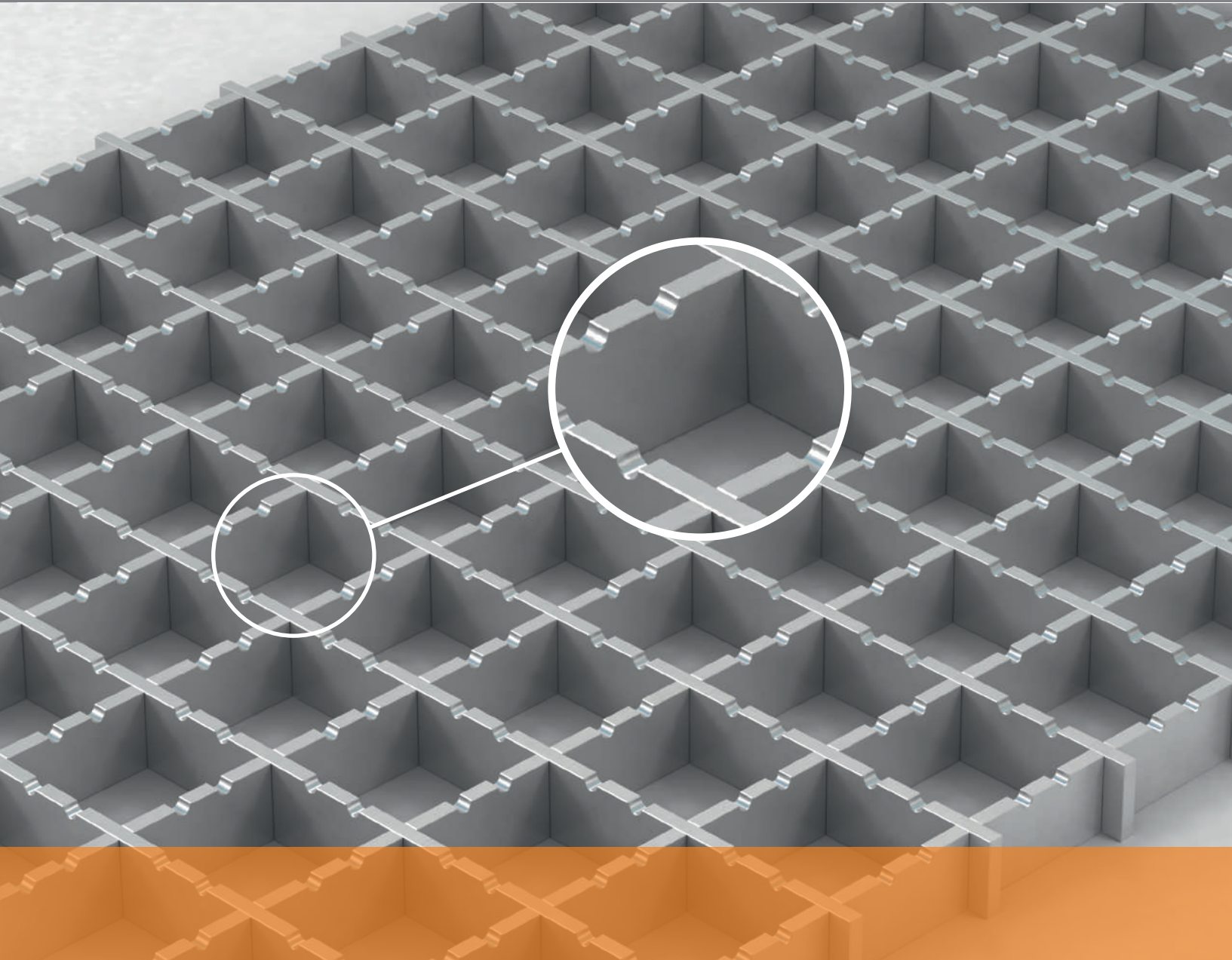
PLATFORM GRATING

FULL PASS DOUBLE NOTCHED GRATING

- Nonslip is maximized by the notches made on both sides.



- Nonslip is maximized by the doublesided notches.



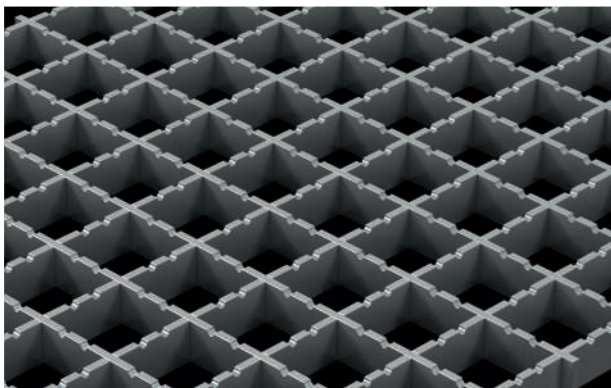
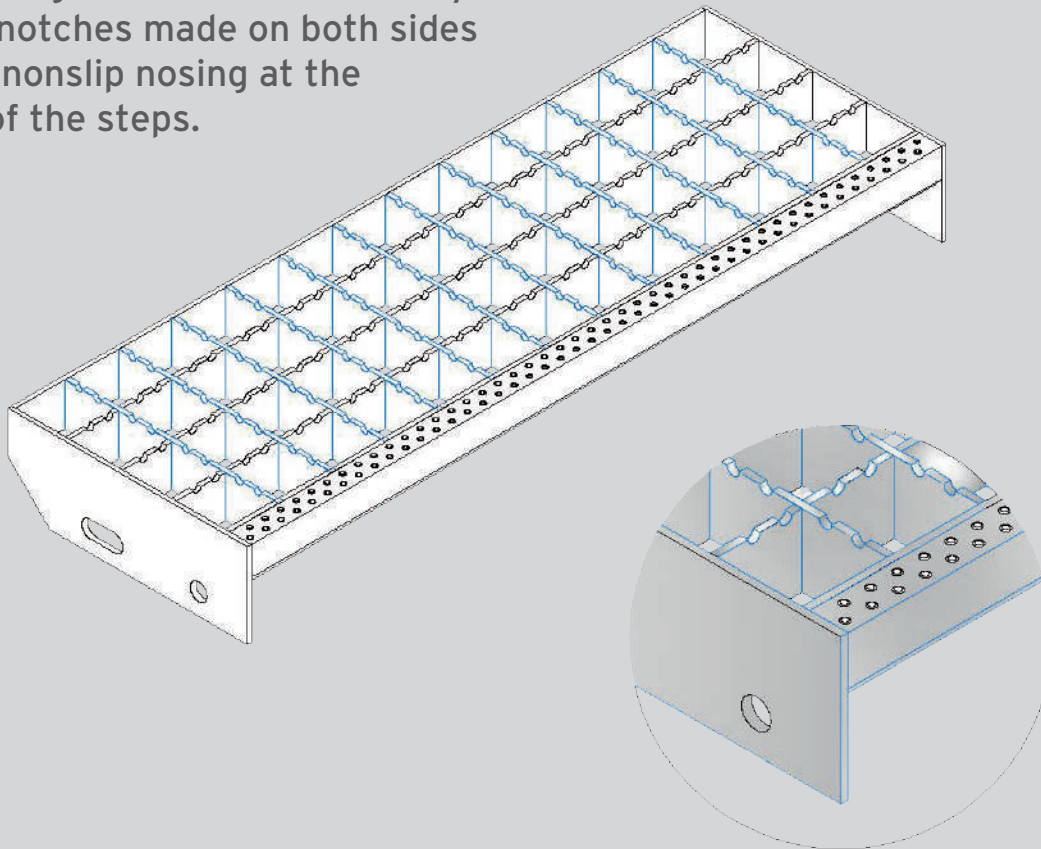
- Double-sided notched full pass platform grating is typically chosen for environments where there is excessively slippery materials.



PLATFORM GRATING

FULL PASS DOUBLE NOTCHED STEP

- Slipping of feet is minimized by the notches made on both sides and nonslip nosing at the tip of the steps.

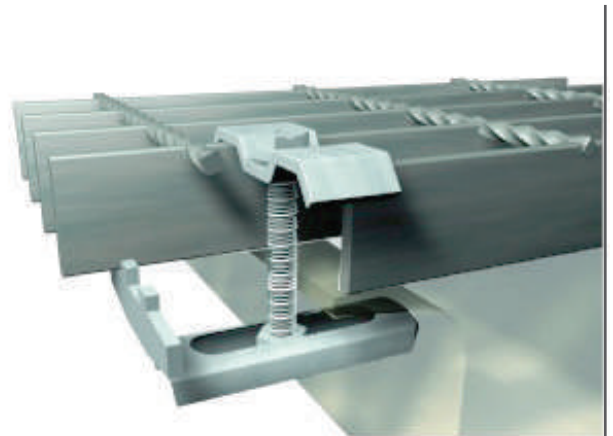


- It is manufactured by making double notches on the transversal and longitudinal sheet bars of same size. It is heavier than the square twist and half pass platform grating. Nonslip is maximized.



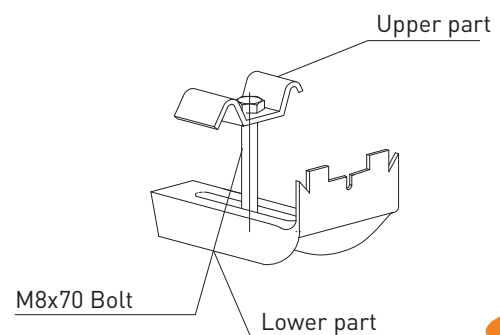
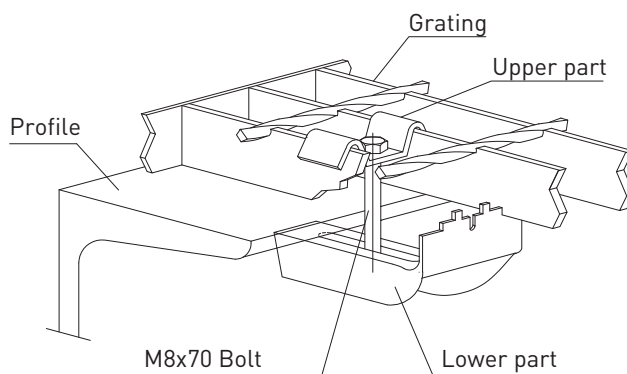
FASTENERS

- It is made of a lower tab and upper part "M". The lower connecting part holds the grating (to be installed) from below to attach it to the part to be installed. By the special square weld (foursquare) nut placed in the lower tab, it is passed through the upper part M and tightened by a bolt. The interconnection distance is adjusted by the long slot hole on the lower part. Installation is very easy as the bolt is tightened over the part M.



Members used with fasteners:

- Lower connecting part (tab)
- Upper connecting part (M)
- Metric bolt (8x70mm used generally)
- Foursquare (square weld) nut



EXPANDED METAL

An Expanded Metal is manufactured by extending the sheet plates and is a one-piece product due to this manufacturing technique. Due to this feature, it is more durable as compared to many products with similar appearance.

Because of its durability and flexibility in manufacturing, it is used in many areas from sun blinds to garden fences, covers to stairs. The Expanded Metal can be precisely tailored to your project and area of application as the mesh can be spaced according to customer requirements and as it can be easily cut in the required shape and dimensions based on the requirements for area of use and request of the customers.

Manufacturing and Design

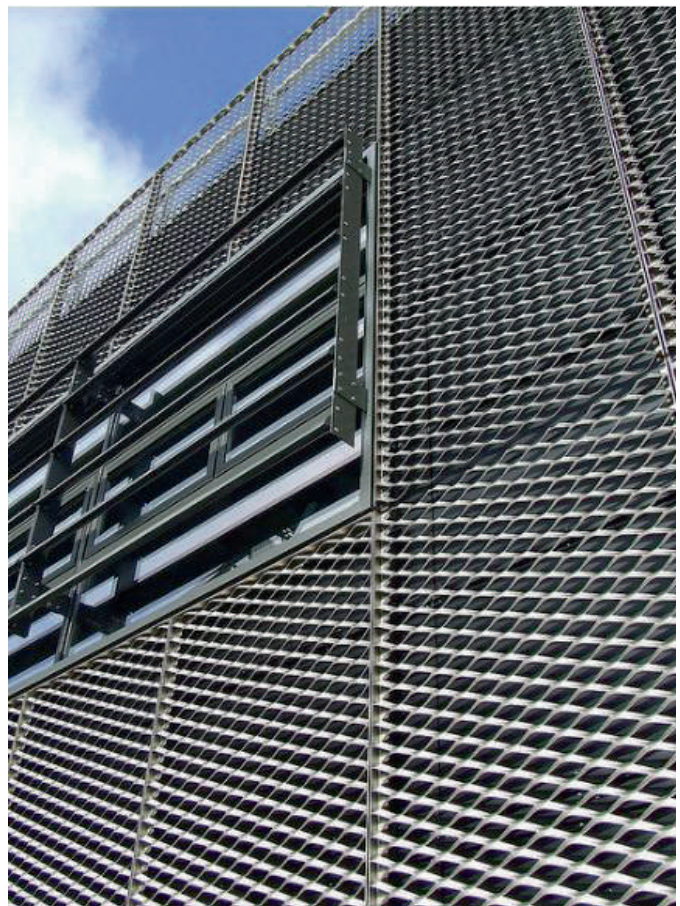
Based on the demand or project of customers, the Expanded Metal is prepared for manufacturing according to conditions of area of application. It is manufactured in custom dimensions based on the needs and/or manufactured in custom cut as well as standard manufacturing dimensions so that our products can be delivered fully compatible with the area of application.

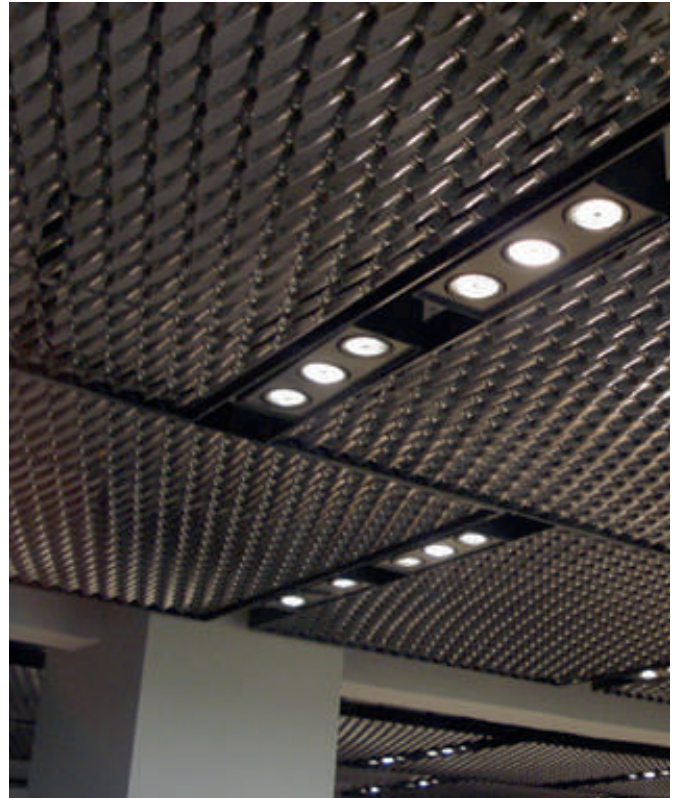
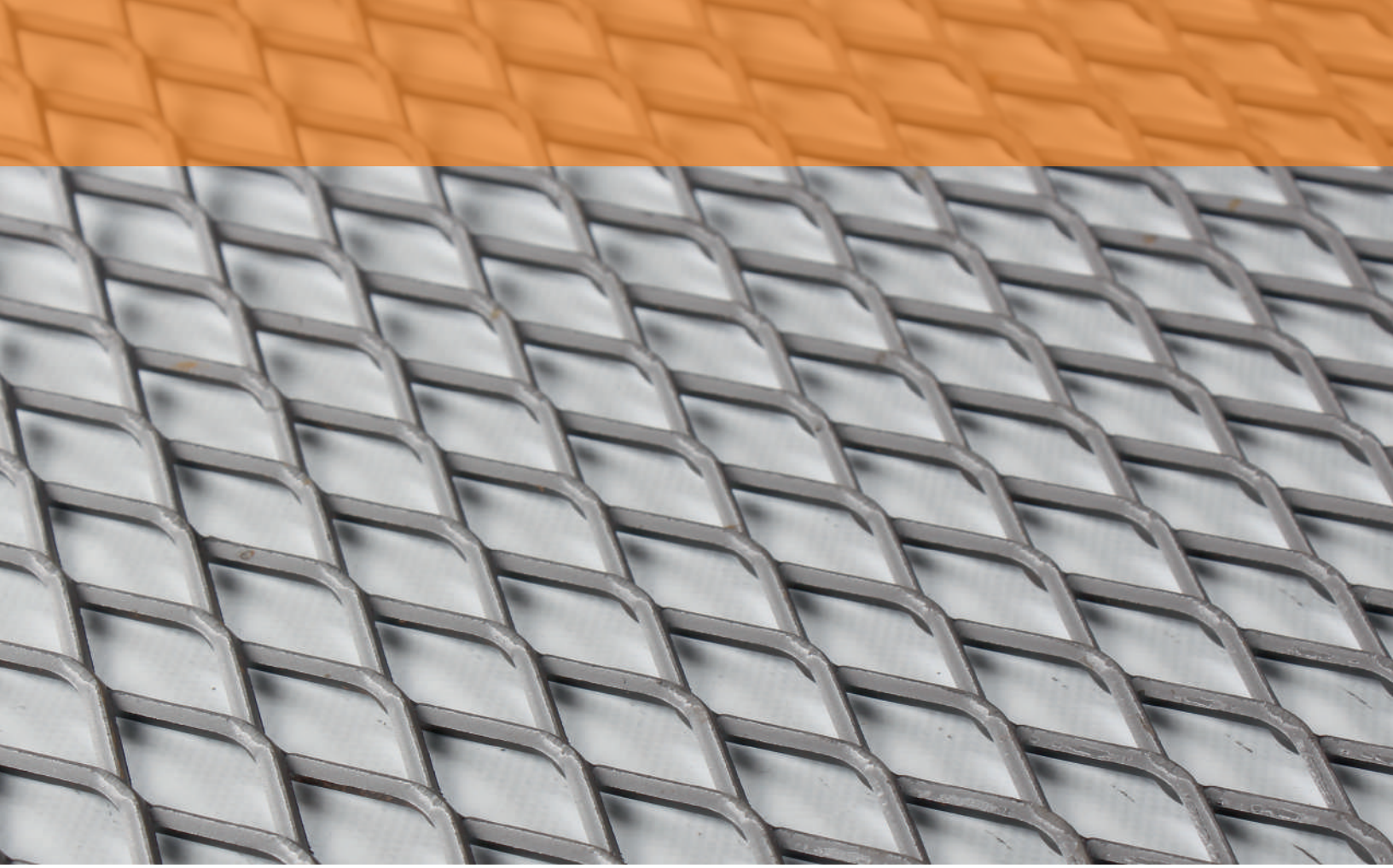
Types of Raw Materials

Steel, stainless steel, aluminum, copper, titanium, zinc (and many other metallic materials).

Coating Types

Hot dip galvanized coating, electro galvanizing, electrostatic application of powdered paint, and anodized coating.

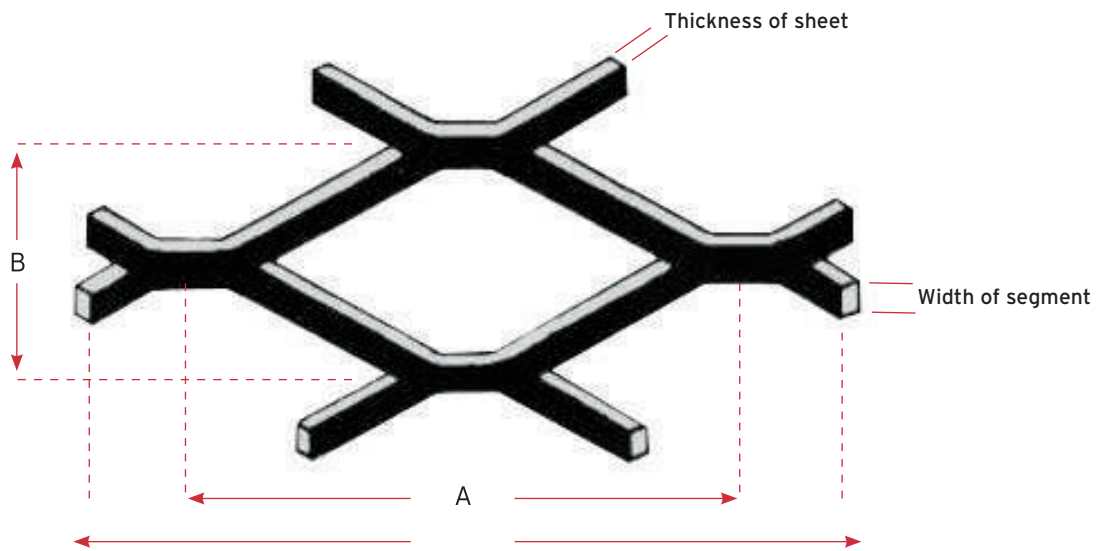




EXPANDED METAL / dimensioning

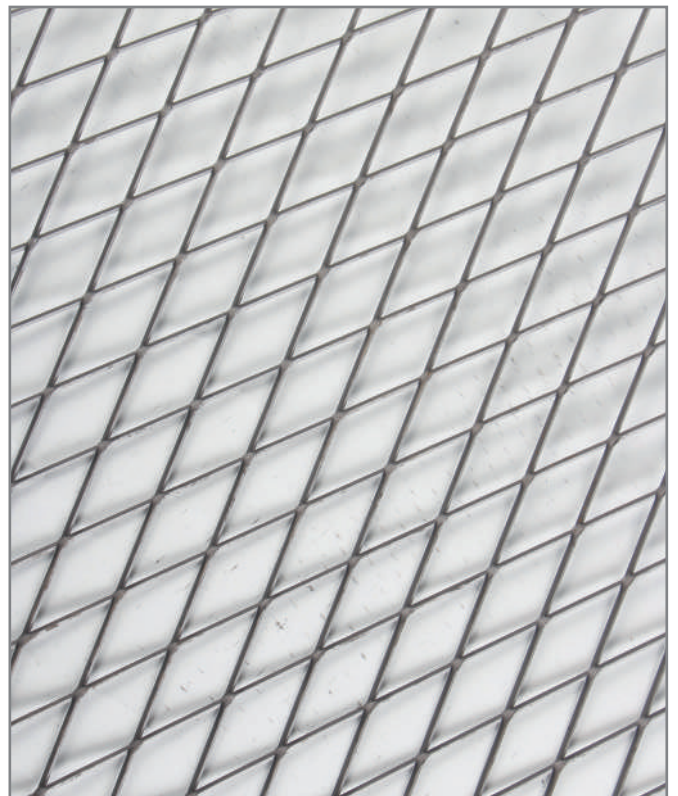
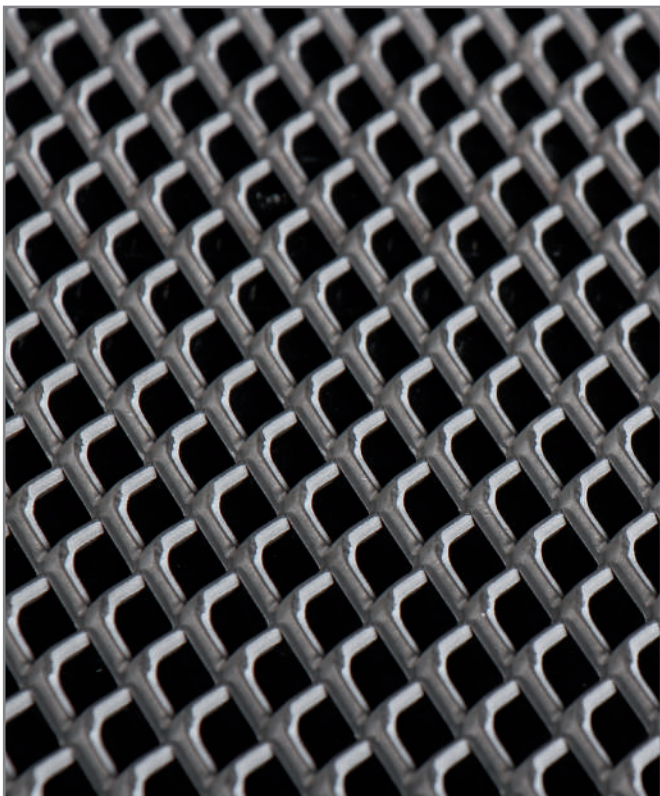
SHEET PLATES

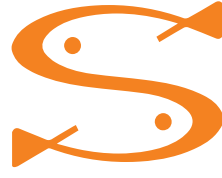
ITEM CODE	MESH DISTANCE axb	THICKNESS t=mm	WIDTH	MATERIAL
SSTM 001	30X10 mm	1,5 mm - 5 mm	300 - 1500 mm	St37 - st52
SSTM 002	42X14 mm	1,5 mm - 5 mm	300 - 1500 mm	St37 - st52
SSTM 003	50X20 mm	1,5 mm - 5 mm	300 - 1500 mm	St37 - st52
SSTM 004	60X24 mm	1,5 mm - 5 mm	300 - 1500 mm	St37 - st52
SSTM 005	62X26 mm	1,5 mm - 5 mm	300 - 1500 mm	St37 - st52
SSTM 006	82X30 mm	1,5 mm - 5 mm	300 - 1500 mm	St37 - st52
SSTM 007	100X41 mm	1,5 mm - 5 mm	300 - 1500 mm	St37 - st52



ALUMINUM PLATES

ITEM CODE	MESH DISTANCE axb	THICKNESS t=mm	WIDTH	MATERIAL
SSTM 001	30X10 mm	2 mm - 4 mm	300 - 1500 mm	Aluminum
SSTM 002	42X14 mm	2 mm - 4 mm	300 - 1500 mm	Aluminum
SSTM 003	50X20 mm	2 mm - 4 mm	300 - 1500 mm	Aluminum
SSTM 004	60X24 mm	2 mm - 4 mm	300 - 1500 mm	Aluminum
SSTM 005	62X26 mm	2 mm - 4 mm	300 - 1500 mm	Aluminum
SSTM 006	82X30 mm	2 mm - 4 mm	300 - 1500 mm	Aluminum
SSTM 007	100X41 mm	2 mm - 4 mm	300 - 1500 mm	Aluminum





**SİSTEM PLATFORM
IZGARA METAL
SAN. TİC. LTD. ŞTİ.**

MALİKÖY ANADOLU OSB 8. CADDE NO: 23 SİNCAN-ANKARA
TEL: 0 312 394 0 394 FAKS: 0 312 385 26 16
sistem@sistemplatform.com.tr
www.sistemplatform.com.tr

—0312—
394 0 394